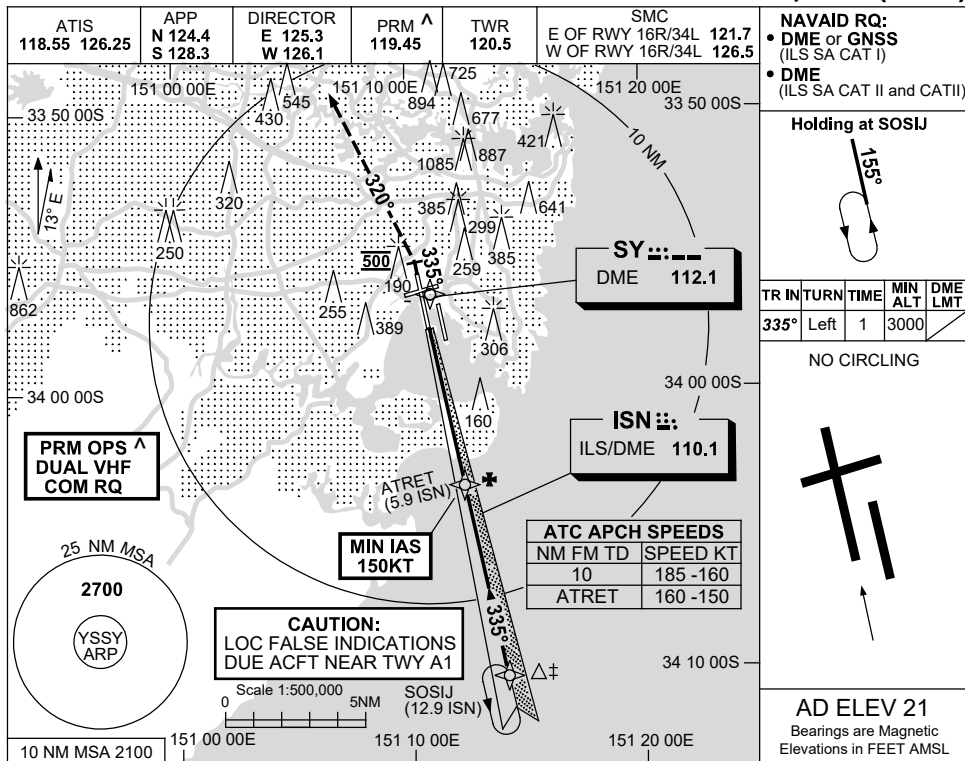


**USE QNH** ILS RWY 34L - Page 2  
**SYDNEY/KINGSFORD SMITH, NSW (YSSY)**

13 JUN 2024



**NAVAID RQ:**  
 • DME or GNSS (ILS SA CAT I)  
 • DME (ILS SA CAT II and CAT II)

**Holding at SOSIJ**



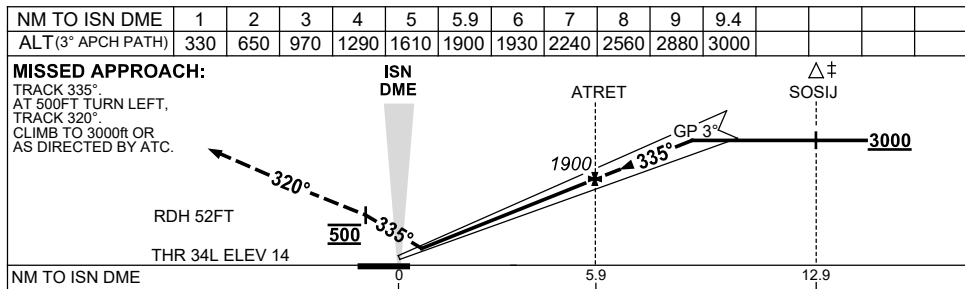
TR IN	TURN	TIME	MIN ALT	DME LMT
335°	Left	1	3000	

NO CIRCLING



**AD ELEV 21**

Bearings are Magnetic  
Elevations in FEET AMSL



**NOTES**

- ‡1. ACFT MAY BE RADAR VECTORED TO FNA.
- ^2. SIMULTANEOUS APCH AUTHORISED WITH RWY 34R. SEE PRM USER INSTRUCTIONS FOR ADDN RQMNTS.
- #3. SPECIAL AIRCREW & ACFT CERTIFICATION REQUIRED.

CATEGORY	A	B	C	D
S-I ILS CAT II#		RA 102 DA 114 (100)	300 RVR	
S-I ILS SA CAT II#		RA 102 DA 114 (100)	600 RVR	
S-I ILS SA CAT I#		RA 163 DA 164 (150)	650 RVR	

Changes: ABN DCMSD, Editorial.

SSYI21-179

**CAUTION: CLOSELY SPACED PARALLEL RUNWAYS** ^