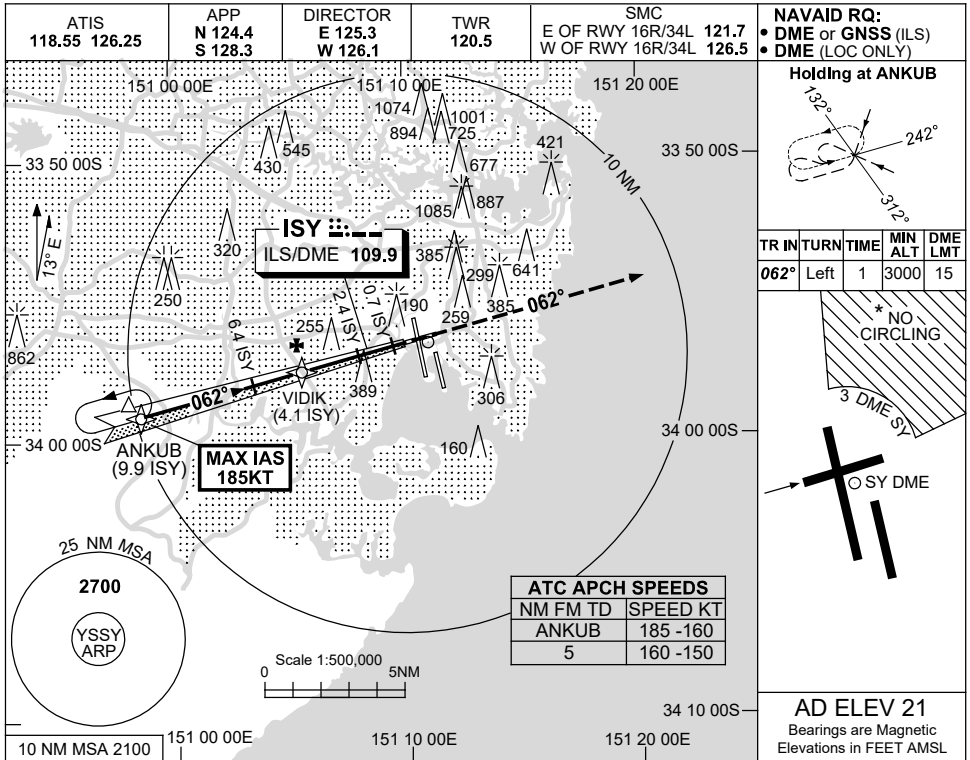


USE QNH

ILS or LOC RWY 07

13 JUN 2024

**SYDNEY/KINGSFORD SMITH, NSW (YSSY)**

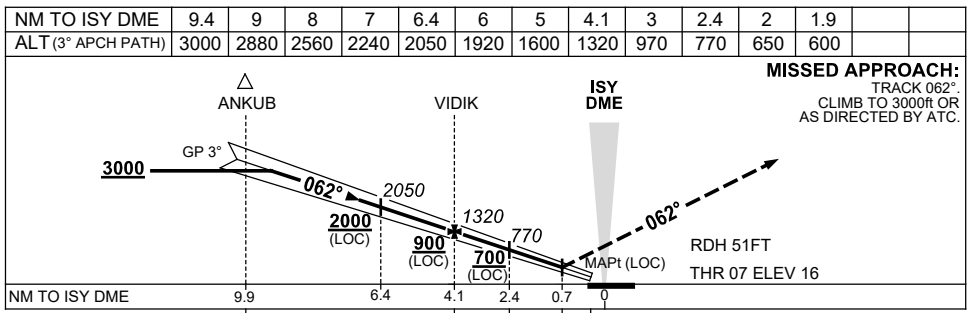


**Holding at ANKUB**

TR IN	TURN	TIME	MIN ALT	DME LMT
062°	Left	1	3000	15

**NO CIRCLING**  
\* NO CIRCLING  
3 DME SY

**AD ELEV 21**  
Bearings are Magnetic  
Elevations in FEET AMSL



**NOTES**

1. MAX IAS:  
ANKUB : 185KT.
- \* 2. NO CIRCLING  
BEYOND 3 DME SY  
EAST OF RWY 16R &  
NORTH OF RWY 25.
- ‡ 3. SPECIAL ALTN MNM  
700/2.5KM.  
(NOT APPLICABLE  
TO LOC/DME).

CATEGORY	A	B	C	D
S-I ILS		220 (204-1.5)	1500 RVR	
S-I LOC		600 (579-3.3)		
CIRCLING*	710 (689-2.4)		1000 (979-4.0)	1000 (979-5.0)
ALTERNATE*‡	(1189-4.4)		(1479-6.0)	(1479-7.0)

Changes: ABN DCMSD, Editorial.

SSYII07-179