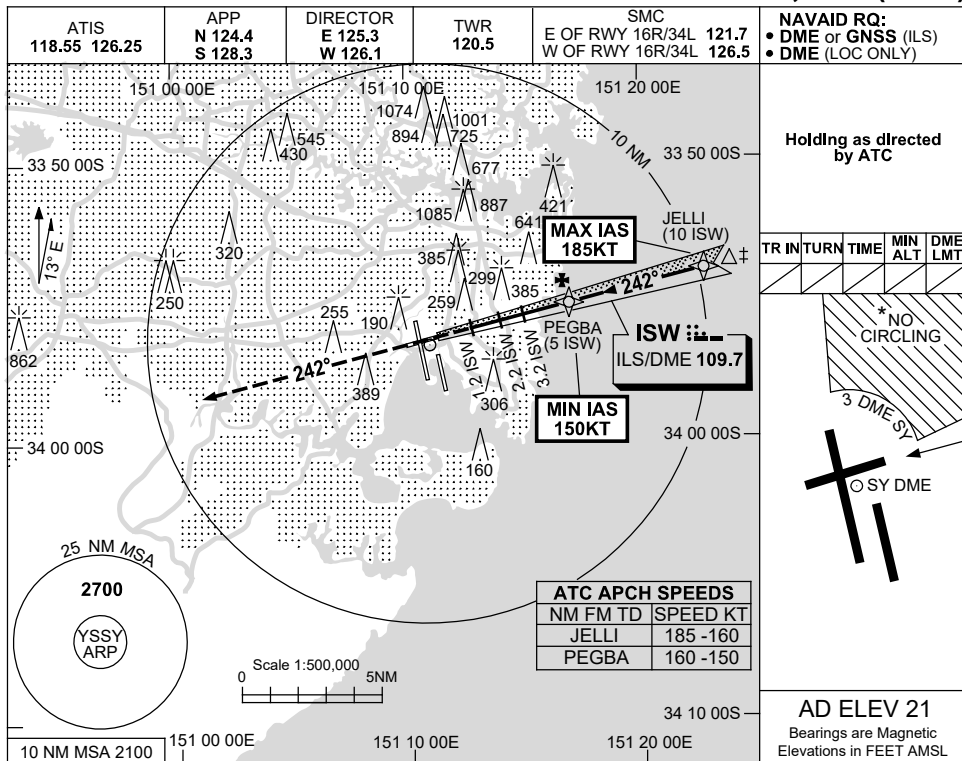


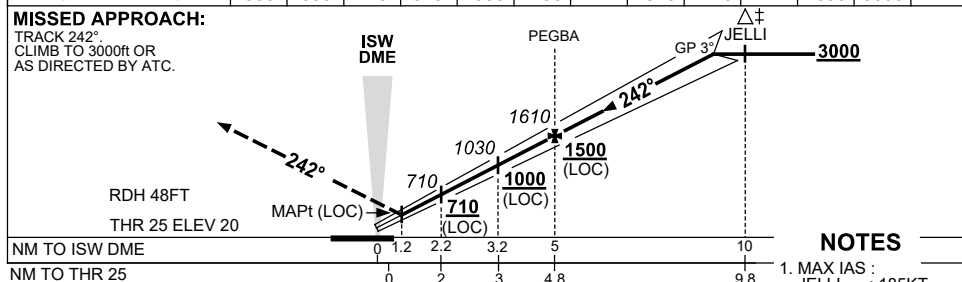
USE QNH SYDNEY/KINGSFORD SMITH, NSW (YSSY)

ILS or LOC RWY 25

13 JUN 2024



NM TO ISW DME	1.8	2	2.2	3	3.2	4	5	6	7	8	9	9.4	
ALT (3° APCH PATH)	580	650	710	970	1030	1290	1610	1920	2240	2580	2880	3000	



NOTES

1. MAX IAS : JELLI : 185KT.
2. ACFT MAY BE RADAR VECTORED TO FNA.
3. NO CIRCLING BEYOND 3 DME SY EAST OF RWY 16R & NORTH OF RWY 25.
4. SPECIAL ALTN MNM 700/2.5KM. (NOT APPLICABLE TO LOC/DME).

CATEGORY	A	B	C	D
S-I ILS		230 (210-1.5)	1500 RVR	
S-I LOC		580 (559-3.2)		
CIRCLING*	710 (689-2.4)		1000 (979-4.0)	1000 (979-5.0)
ALTERNATE*	(1189-4.4)		(1479-6.0)	(1479-7.0)

Changes: ABN DCMSD, Editorial.

SSYI06-179