

USE QNH

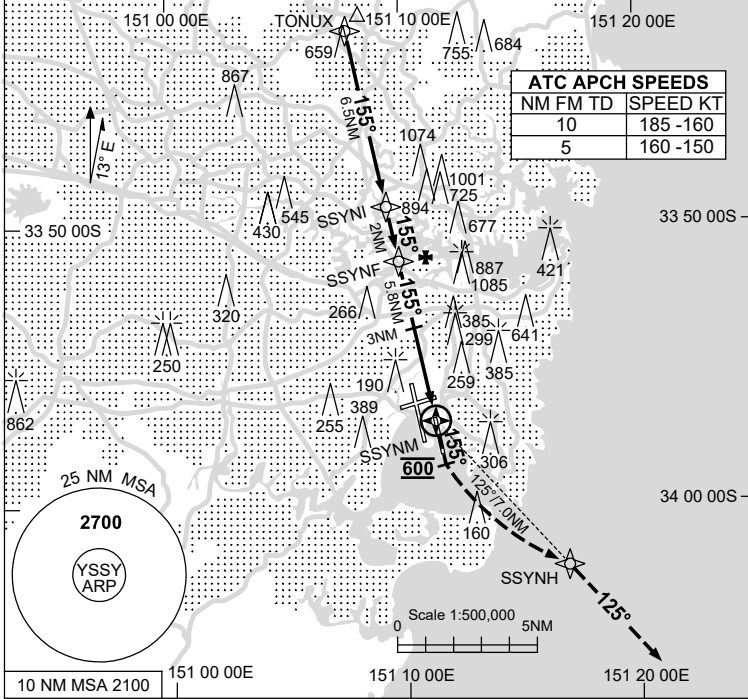
RNP RWY 16L

1 DEC 2022

SYDNEY/KINGSFORD SMITH, NSW (YSSY)

ATIS 118.55 126.25	APP N 124.4 S 128.3	DIRECTOR E 125.3 W 126.1	TWR 124.7	SMC E OF RWY 16R/34L 121.7 W OF RWY 16R/34L 126.5
-----------------------	---------------------------	--------------------------------	--------------	---

- RNP APCH
LNAV/VNAV RQMNTS:
 • YSSY QNH RQ
 • YSSY TEMP RQ
 • PROC TEMP RANGE
 0°C TO +61°C



Holding as directed by ATC

TR	IN	TURN	TIME	MIN ALT	DME LMT

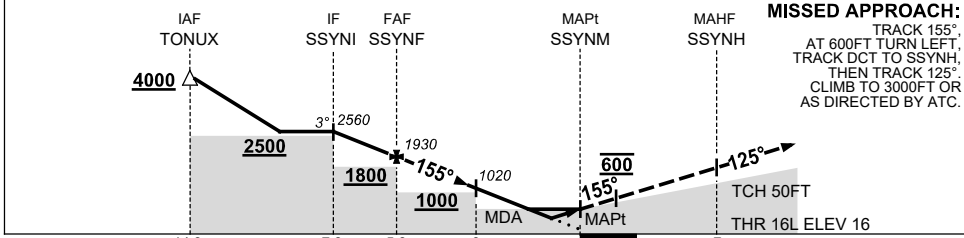
NO CIRCLING



AD ELEV 21

Bearings are Magnetic
Elevations in FEET AMSL

NM TO NEXT WPT	SSYNI	1	SSYNF	5	4	3	2	1.3	0.9	SSYNM			
ALT (3° APCH PATH)	2560	2230	1930	1660	1340	1020	700	480	360				



NM TO SSYNM	14.3	7.8	5.8	3	0	7
Altitudes	4000	2500	1800	1000	600	500
Waypoints	IAF TONUX	IF SSYNI	FAF SSYNF	MAPt SSYNM	MAHF SSYNH	

NOTES

- MAX IAS:
INITIAL : 210KT.
MISS APCH: 220KT.

CATEGORY	A	B	C	D
LNAV/VNAV		360 (344-1.0)		
LNAV		480 (459-1.7)		
CIRCLING	NOT AUTHORISED			
ALTERNATE	(1189-4.4)	(1479-6.0)	(1479-7.0)	

Changes: LNAV/VNAV MINIMA, DIST/ALT TABLE.

SSYGN01-173