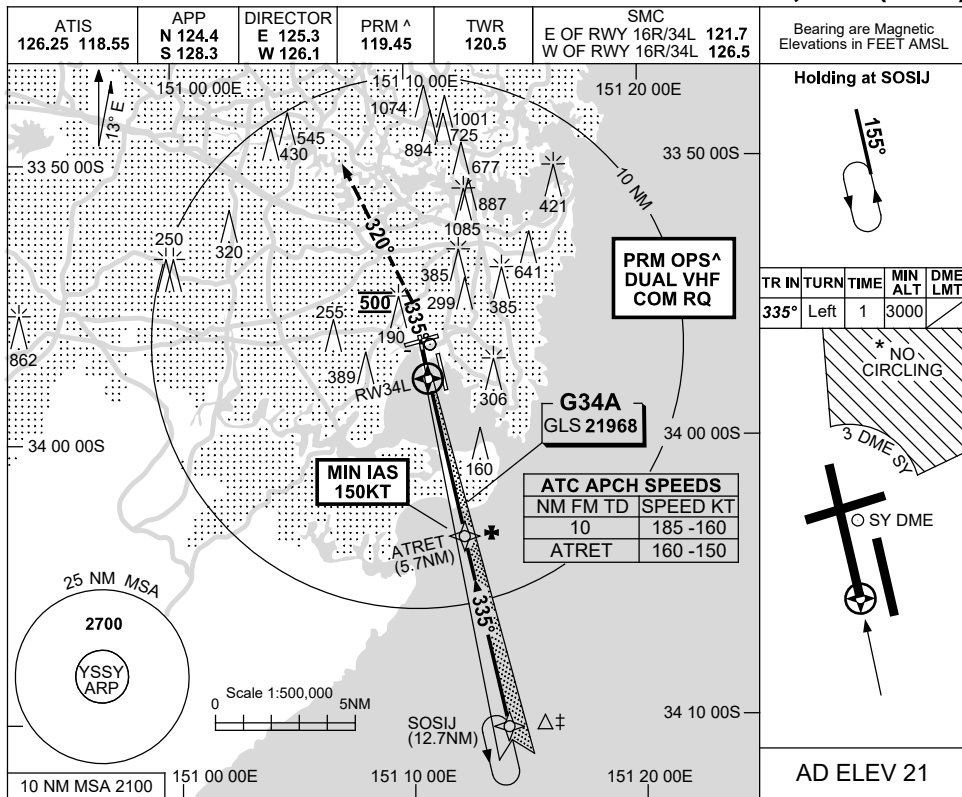


**USE QNH** GLS RWY 34L  
**SYDNEY/KINGSFORD SMITH, NSW (YSSY)**

**13 JUN 2024**



**Holding at SOSIJ**

| TR   | IN   | TURN | TIME | MIN ALT | DME LMT |
|------|------|------|------|---------|---------|
| 335° | Left | 1    |      | 3000    |         |

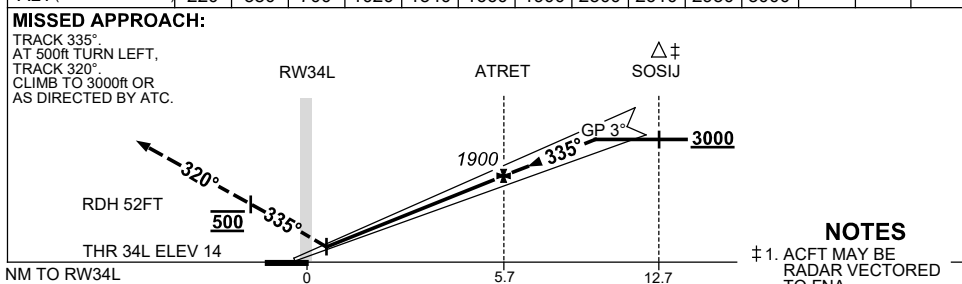
\* NO CIRCLING

3 DME SY

\* O SY DME

**AD ELEV 21**

|                    |     |     |     |      |      |      |      |      |      |      |      |  |  |
|--------------------|-----|-----|-----|------|------|------|------|------|------|------|------|--|--|
| RW34L DIST         | 0.5 | 1   | 2   | 3    | 4    | 5    | 5.7  | 7    | 8    | 9    | 9.2  |  |  |
| ALT (3° APCH PATH) | 220 | 380 | 700 | 1020 | 1340 | 1660 | 1900 | 2300 | 2610 | 2930 | 3000 |  |  |



- NOTES**
- ‡ 1. ACFT MAY BE RADAR VECTORED TO FNA.
  - ‡ 2. SIMULTANEOUS APCH AUTHORISED WITH RWY 34R. SEE PRM USER INSTRUCTIONS FOR ADDN RQMNTS.
  - \* 3. NO CIRCLING BEYOND 3 DME SY EAST OF RWY 16R & NORTH OF RWY 25.

| CATEGORY   | A             | B             | C              | D              |
|------------|---------------|---------------|----------------|----------------|
| S-I GLS    |               | 220 (206) 0.8 |                | 800 RVR        |
| CIRCLING * | 710 (689-2.4) |               | 1000 (979-4.0) | 1000 (979-5.0) |
| ALTERNATE  | (1189-4.4)    |               | (1479-6.0)     | (1479-7.0)     |

Changes: ABN DCMSD, Editorial. SSYGL05-179

**CAUTION: CLOSELY SPACED PARALLEL RUNWAYS ^**