

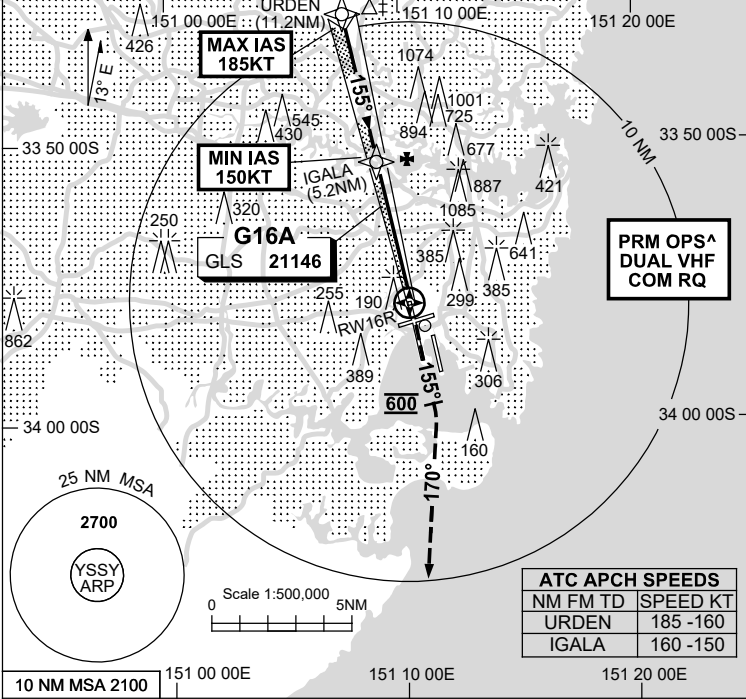
13 JUN 2024

USE QNH
SYDNEY/KINGSFORD SMITH, NSW (YSSY)

GLS RWY 16R

ATIS 126.25 118.55	APP N 124.4 S 128.3	DIRECTOR E 125.3 W 126.1	PRM ^ 119.45	TWR 120.5	SMC E OF RWY 16R/34L 121.7 W OF RWY 16R/34L 126.5
-----------------------	---------------------------	--------------------------------	-----------------	--------------	---------------------------------------------------------

Bearing are Magnetic
 Elevations in FEET AMSL



Holding as advised by ATC

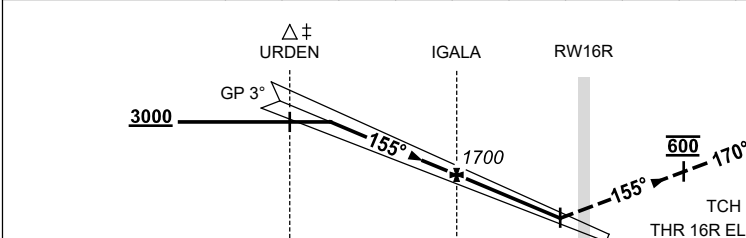
TR IN	TURN	TIME	MIN ALT	DME LMT

NO CIRCLING

3 DME SY
 SY DME

AD ELEV 21

RWY16R DIST	9.2	9	8	7	6	5.2	4	3	2	1	0.5		
ALT (3° APCH PATH)	3000	2920	2600	2290	1970	1700	1330	1010	690	380	210		



NOTES

- MAX IAS: URDEN : 185KT.
- ACFT MAY BE RADAR VECTORED TO FNA.
- SIMULTANEOUS APCH AUTHORISED WITH RWY 16L. SEE PRM USER INSTRUCTIONS FOR ADDN RQMNTS.
- NO CIRCLING BEYOND 3 DME SY EAST OF RWY 16R & NORTH OF RWY 25.

CATEGORY	A	B	C	D
S-I GLS		210 (203) 0.8		550RVR
CIRCLING *	710 (689-2.4)		1000 (979-4.0)	1000 (979-5.0)
ALTERNATE	(1189-4.4)		(1479-6.0)	(1479-7.0)

Changes: ABN DCMSD, Editorial. SSYGL03-179

CAUTION: CLOSELY SPACED PARALLEL RUNWAYS ^