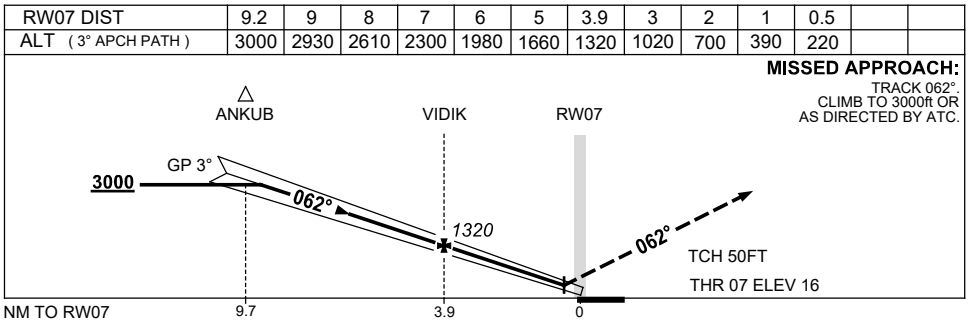
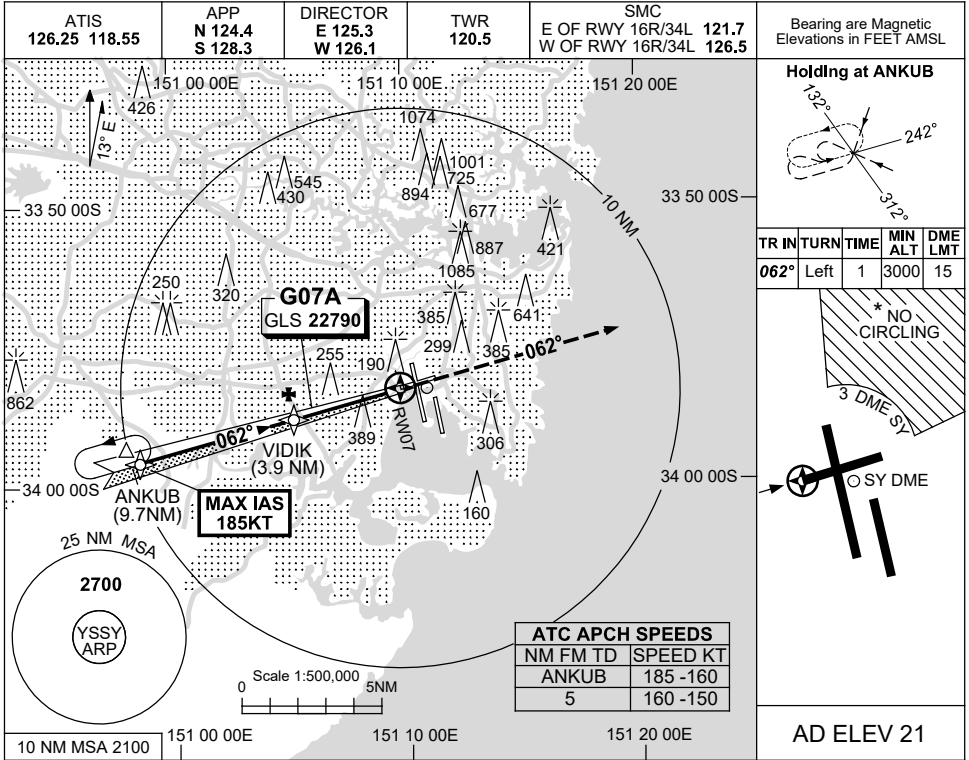


**USE QNH** **GLS RWY 07**  
**SYDNEY/KINGSFORD SMITH, NSW (YSSY)**

**13 JUN 2024**



CATEGORY	A	B	C	D
S-I GLS	<b>220 (204-1.5) 1500 RVR</b>			
CIRCLING *	<b>710 (689-2.4)</b>		<b>1000 (979-4.0)</b>	<b>1000 (979-5.0)</b>
ALTERNATE	(1189-4.4)		(1479-6.0)	(1479-7.0)

**NOTES**  
 1. MAX IAS : ANKUB : 185KT.  
 \* 2. NO CIRCLING BEYOND 3 DME SY EAST OF RWY 16R & NORTH OF RWY 25.

Changes: ABN DCMSD.

SSYGL01-179