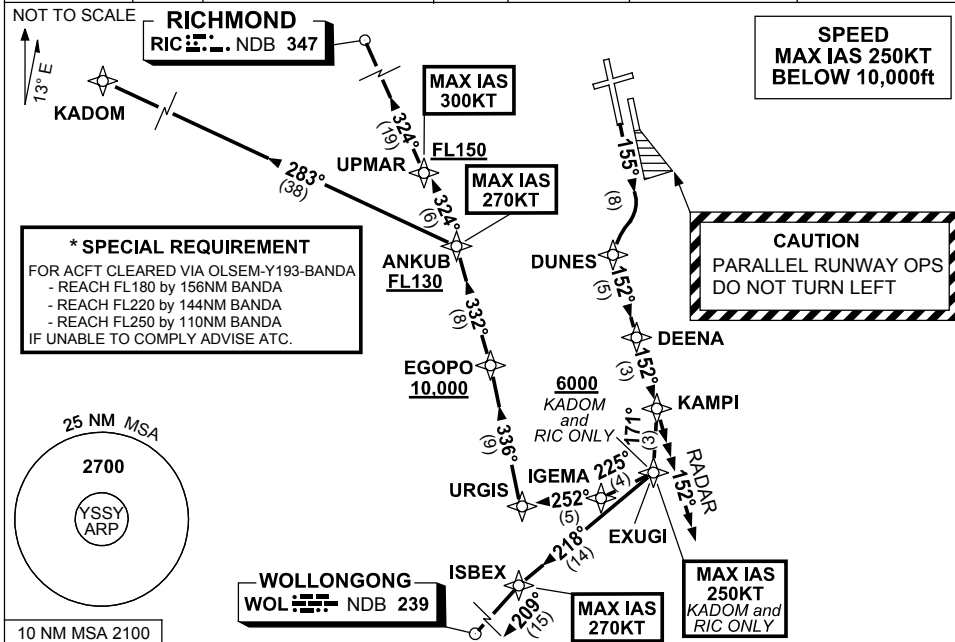


**STANDARD INSTRUMENT DEPARTURES (SID)
RWY 16R KAMPI SIX (RNAV)
SYDNEY/KINGSFORD SMITH, NSW (YSSY)**

30 NOV 2023

ATIS 118.55 126.25	ACD 133.8	SMC E OF RWY 16R/34L 121.7 W OF RWY 16R/34L 126.5	TWR 120.5	DEP(N) N&E 123.0	DEP(S) S,W&NW 129.7	APP(CURFEW HR) 128.3
-----------------------	--------------	---	--------------	---------------------	------------------------	-------------------------



*** SPECIAL REQUIREMENT**
FOR ACFT CLEARED VIA OLSEM-Y193-BANDA
- REACH FL180 by 156NM BANDA
- REACH FL220 by 144NM BANDA
- REACH FL250 by 110NM BANDA
IF UNABLE TO COMPLY ADVISE ATC.

DEPARTURE: KAMPI SIX
CAUTION: Parallel runway operations - DO NOT TURN LEFT
MAX IAS 250KT until EXUGI (KADOM and RIC ONLY)

- GRAD 3.3%
- Track 155°

RWY 16R

- As soon as practicable turn RIGHT, track DCT to DUNES
- Turn LEFT track 152° to DEENA
- Track 152° to KAMPI

TRANSITIONS:

RADAR

- At KAMPI continue tracking 152°
- Expect radar vectors to cleared route
- For ACFT cleared via OLSEM
- * See SPECIAL REQUIREMENT above

KADOM

- From KAMPI turn RIGHT track 171° to EXUGI
MAX IAS 270KT until ANKUB
Cross EXUGI AT or ABV 6000ft (RQ GRAD TO EXUGI: 6.7%)
- Turn RIGHT, track 225° to IGEMA
- Turn RIGHT, track 252° to URGIS
- Turn RIGHT, track 336° to EGOPO
Cross EGOPO AT or ABV 10,000ft
- Turn LEFT, track 332° to ANKUB
Cross ANKUB AT or ABV FL130
- Turn LEFT, track 283° to KADOM then as cleared.

RIC

- From KAMPI turn RIGHT track 171° to EXUGI
MAX IAS 270KT until ANKUB
Cross EXUGI AT or ABV 6000ft (RQ GRAD TO EXUGI: 6.7%)
- Turn RIGHT, track 225° to IGEMA
- Turn RIGHT, track 252° to URGIS
- Turn RIGHT, track 336° to EGOPO
Cross EGOPO AT or ABV 10,000ft
- Turn LEFT, track 332° to ANKUB
Cross ANKUB AT or ABV FL130
MAX IAS 300KT until UPMAR
- Turn LEFT, track 324° to UPMAR
Cross UPMAR AT or ABV FL150
- Track 324° to RIC, then as cleared.

WOL

- From KAMPI turn RIGHT track 171° to EXUGI
MAX IAS 270KT until ISBEX
- Turn RIGHT, track 218° to ISBEX
- Turn LEFT, track 209° to WOL, then as cleared.

Changes: INITIAL TURN, TRANSITIONS, SPECIAL RQMNTS, Editorial. SSYDP10-177