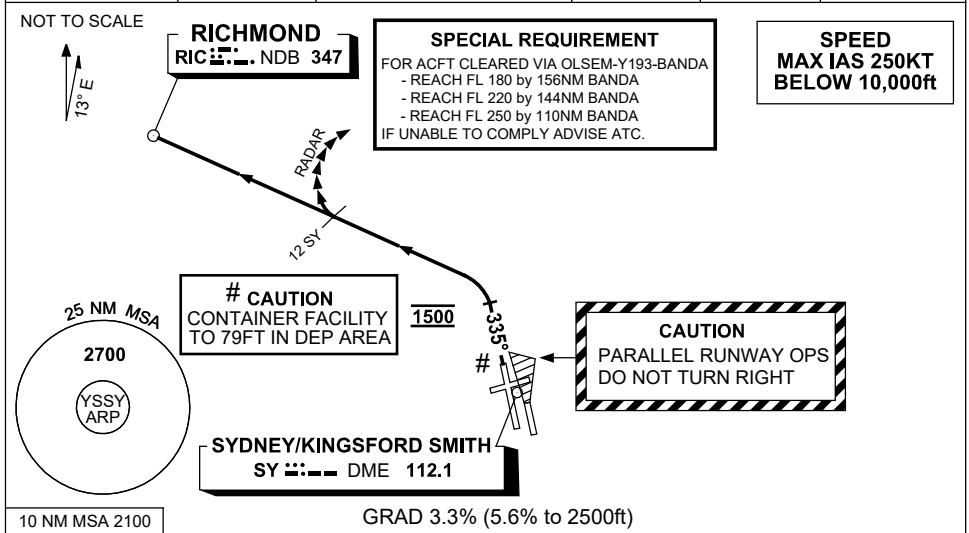


# STANDARD INSTRUMENT DEPARTURES (SID) RWY 34L RICHMOND SIX DEPARTURE (JET) SYDNEY/KINGSFORD SMITH, NSW (YSSY)

30 NOV 2023

ATIS 118.55 126.25	ACD 133.8	SMC E OF RWY 16R/34L 121.7 W OF RWY 16R/34L 126.5	TWR 120.5	DEP(N) N&E 123.0	DEP(S) S,W&NW 129.7
-----------------------	--------------	---	--------------	---------------------	------------------------



## RICHMOND (RIC) SIX DEPARTURE

**RWY 34L**

CAUTION: parallel runway operations - DO NOT TURN RIGHT

- GRAD 3.3% (5.6% to 2500ft)
- Track 335°
- AT 1500ft turn LEFT, track direct to RIC NDB, then follow transition instruction

## TRANSITIONS:

### RADAR:

- After passing 12 SY, expect radar vectors to cleared route
- For ACFT cleared via OLSEM see SPECIAL REQUIREMENT above

### RICHMOND: (RIC)

- Track to RIC NDB, then as cleared