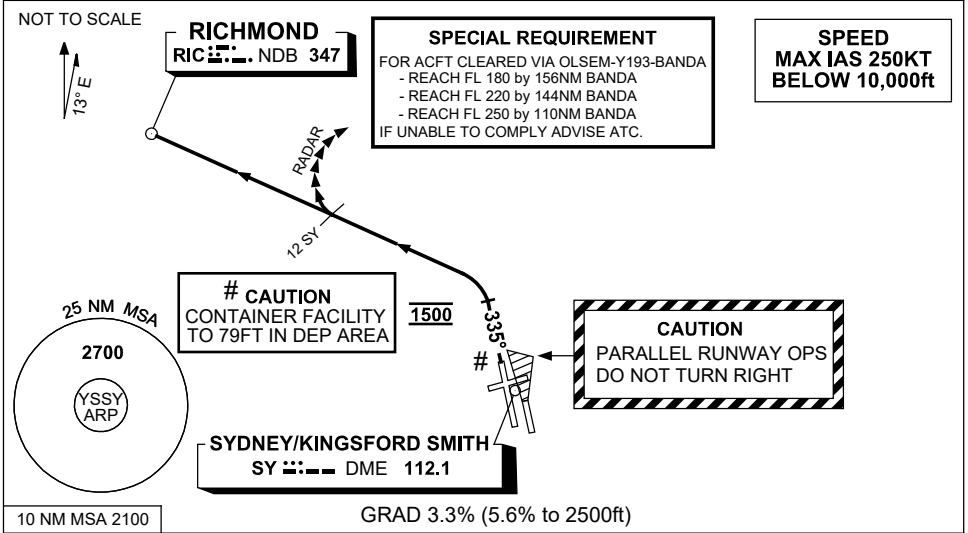


**STANDARD INSTRUMENT DEPARTURES (SID)  
RWY 34L RICHMOND SIX DEPARTURE (JET)  
SYDNEY/KINGSFORD SMITH, NSW (YSSY)**

**30 NOV 2023**

ATIS 118.55 126.25	ACD 133.8	SMC E OF RWY 16R/34L 121.7 W OF RWY 16R/34L 126.5	TWR 120.5	DEP(N) N&E 123.0	DEP(S) S,W&NW 129.7
-----------------------	--------------	---	--------------	---------------------	------------------------



**RICHMOND (RIC) SIX DEPARTURE**

- RWY 34L**      **CAUTION:** parallel runway operations - DO NOT TURN RIGHT
- GRAD 3.3% (5.6% to 2500ft)
  - Track 335°
  - AT 1500ft turn LEFT, track direct to RIC NDB, then follow transition instruction

**TRANSITIONS:**

- RADAR:**
- After passing 12 SY, expect radar vectors to cleared route
  - For ACFT cleared via OLSEM see SPECIAL REQUIREMENT above
- RICHMOND:**
- Track to RIC NDB, then as cleared
- (RIC)**

Changes: SPECIAL RQMNTS, NEW LOGO, Editorial.

SSYDP09-177