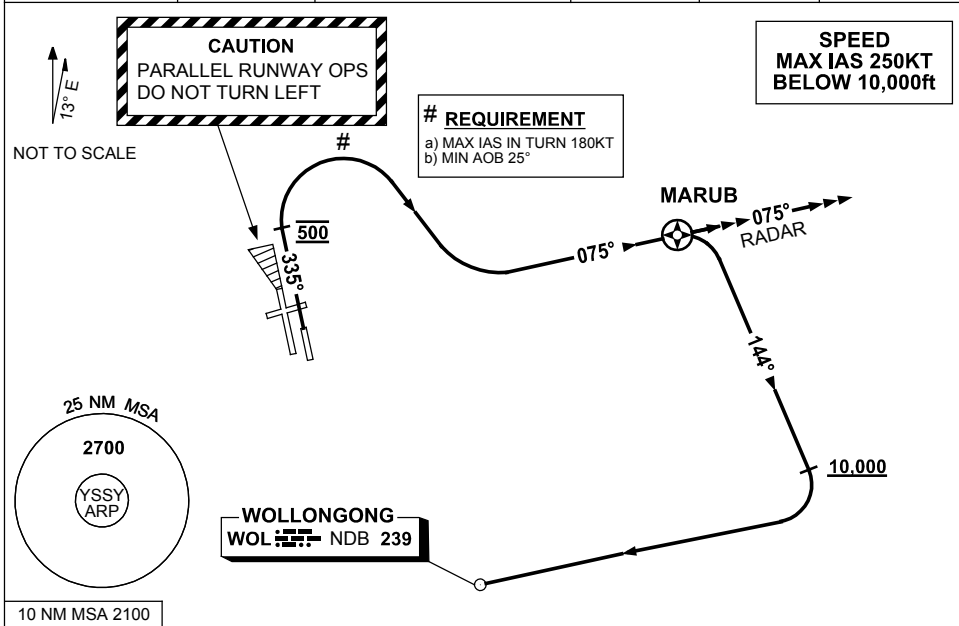


**STANDARD INSTRUMENT DEPARTURES (SID)
RWY 34R MARUB SEVEN (JET) (RNAV)
SYDNEY/KINGSFORD SMITH, NSW (YSSY)**

30 NOV 2023

| | | | | | |
|-----------------------|--------------|---|--------------|---------------------|------------------------|
| ATIS 118.55 126.25 | ACD 133.8 | SMC E OF RWY 16R/34L 121.7 W OF RWY 16R/34L 126.5 | TWR 124.7 | DEP(N) N&E 123.0 | DEP(S) S,W&NW 129.7 |
|-----------------------|--------------|---|--------------|---------------------|------------------------|



DEPARTURE: MARUB SEVEN

CAUTION: Parallel runway operations - DO NOT TURN LEFT

RWY 34R

- GRAD 4.8% to 1500ft, then 3.3%
- Track 335°
- AT 500ft turn RIGHT#, intercept and track 075° to MARUB
- Then follow transition instructions

TRANSITIONS:

RADAR:

- At MARUB continue tracking 075°
- Expect radar vectors to cleared route

**WOLLONGONG:
(WOL)**

- At MARUB turn RIGHT track 144°
- AT or ABV 10,000ft turn RIGHT, track DCT to WOL NDB, then as cleared