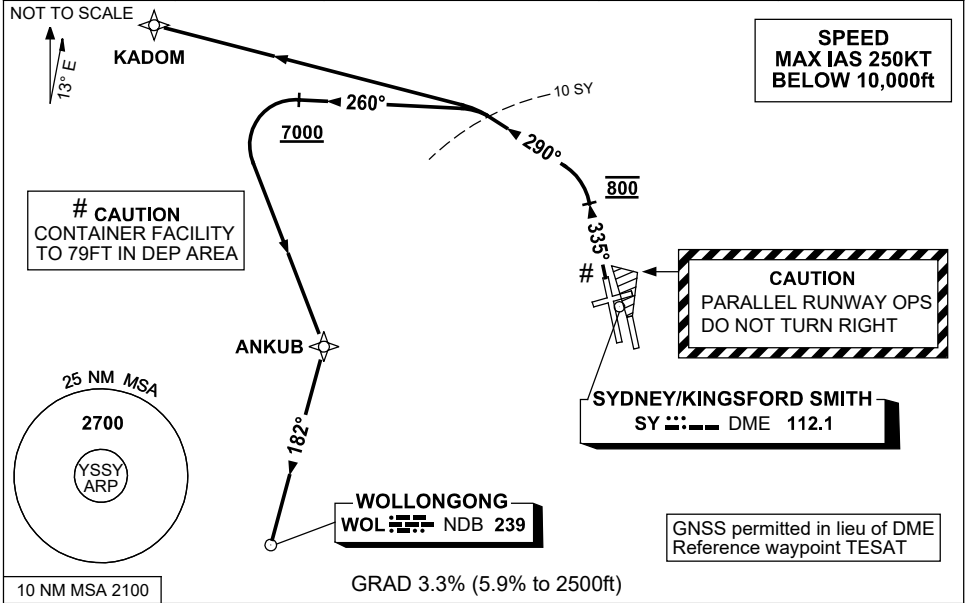


**STANDARD INSTRUMENT DEPARTURES (SID)  
RWY 34L SOUTH WEST DEPARTURES (JETS)  
SYDNEY/KINGSFORD SMITH, NSW (YSSY)**

24 MAR 2022

|                       |              |   |              |                 |
|-----------------------|--------------|---|--------------|-----------------|
| ATIS<br>118.55 126.25 | ACD<br>133.8 | SMC<br>E OF RWY 16R/34L 121.7<br>W OF RWY 16R/34L 126.5 | TWR<br>120.5 | DEP(S)<br>129.7 |
|-----------------------|--------------|---|--------------|-----------------|



**KADOM ONE DEPARTURE**  
**WOLLONGONG (WOL) TWO**  
**RWY 34L (JET) #**

- CAUTION:** parallel runway operations - DO NOT TURN RIGHT
- GRAD 3.3% (5.9% to 2500ft)
  - Track 335°
  - AT 800ft turn LEFT
  - Track 290° to 10 DME SY
  - At 10 DME SY turn LEFT
- For: KADOM
- Track DCT to KADOM, thence via cleared route
- For: WOL
- Track 260°
  - After passing 7000ft, turn LEFT
  - Track DCT to ANKUB
  - From ANKUB track 182° to WOL NDB, thence via cleared route

Changes: Editorial.

SSYDP05-170