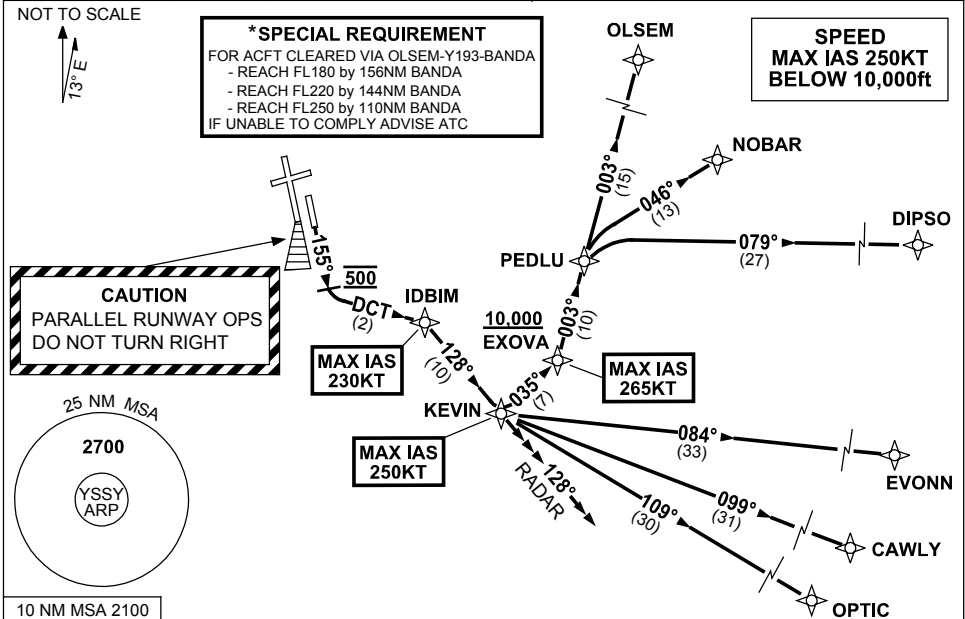


**STANDARD INSTRUMENT DEPARTURES (SID)  
RWY 16L KEVIN SEVEN (RNAV)  
SYDNEY/KINGSFORD SMITH, NSW (YSSY)**

**30 NOV 2023**

ATIS 118.55 126.25	ACD 133.8	SMC E OF RWY 16R/34L 121.7 W OF RWY 16R/34L 126.5	TWR 124.7	DEP(N) N&E 123.0	DEP(S) S,W&NW 129.7
-----------------------	--------------	---	--------------	---------------------	------------------------



**DEPARTURE:** **KEVIN SEVEN**  
**CAUTION:** Parallel runway operations - DO NOT TURN RIGHT  
MAX IAS 230KT until IDBIM

- GRAD 3.3%
- Track 155°

**RWY 16L**

- AT 500ft turn LEFT, track DCT to IDBIM  
MAX IAS 250KT until KEVIN
- AT IDBIM track 128° to KEVIN

**TRANSITIONS:**

**RADAR**

- At KEVIN continue tracking 128°
- Expect radar vectors to cleared route

**CAWLY**

- From KEVIN turn LEFT track 099° to CAWLY, then as cleared.

**DIPSO**

- MAX IAS 265KT until EXOVA
- From KEVIN turn LEFT track 035° to EXOVA  
**Cross** EXOVA AT or ABV 10,000ft (RQ GRAD TO EXOVA: 8%)
- Turn LEFT, track 003° to PEDLU
- Turn RIGHT, track 079° to DIPSO, then as cleared.

**EVONN**

- From KEVIN turn LEFT track 084° to EVONN, then as cleared.

**NOBAR**

- MAX IAS 265KT until EXOVA
- From KEVIN turn LEFT track 035° to EXOVA  
**Cross** EXOVA AT or ABV 10,000ft (RQ GRAD TO EXOVA: 8%)
- Turn LEFT, track 003° to PEDLU
- Turn RIGHT, track 046° to NOBAR, then as cleared.

**OLSEM**

- MAX IAS 265KT until EXOVA
- From KEVIN turn LEFT track 035° to EXOVA  
**Cross** EXOVA AT or ABV 10,000ft (RQ GRAD TO EXOVA: 8%)
- Turn LEFT, track 003° to PEDLU
- Track 003° to OLSEM, then as cleared.

\* See SPECIAL REQUIREMENT above

**OPTIC**

- From KEVIN turn LEFT track 109° to OPTIC, then as cleared.

Changes: INITIAL TURN, TRANSITIONS, SPECIAL RQMNTS, Editorial.

SSYDP03-177