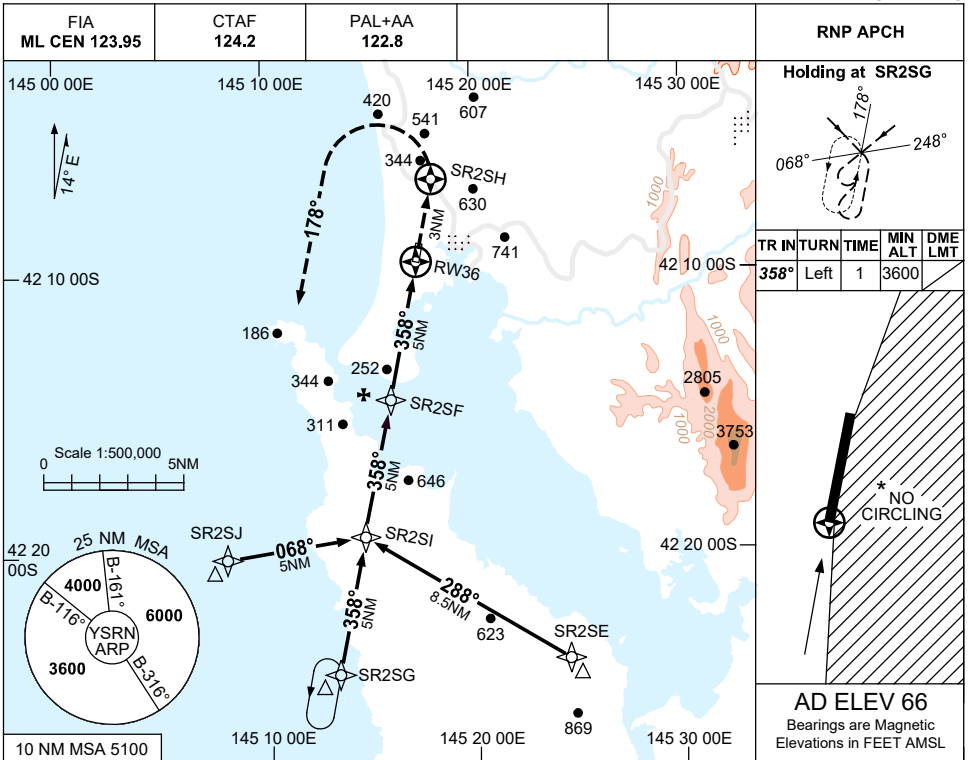


USE QNH

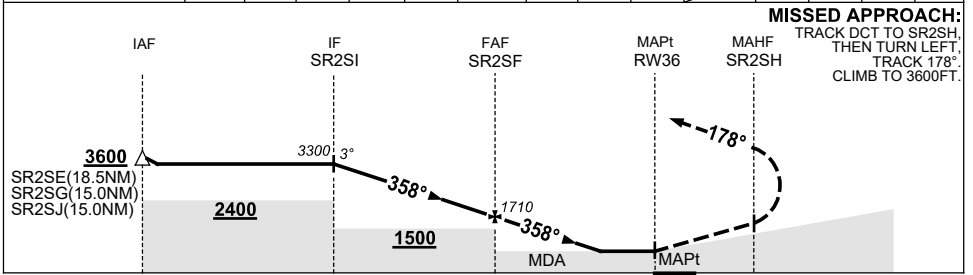
RNP S

7 SEP 2023

STRAHAN, TAS (YSRN)



NM TO NEXT WPT	SR2SI	4	3	2	1	SR2SF	4	3.2	2.3	RW36			
ALT (3° APCH PATH)	3300	2980	2660	2340	2020	1710	1390	1140	840				



CATEGORY	A	B	C	D
CIRCLING *	840 (774-2.4)	1140 (1074-4.0)		NOT APPLICABLE
ALTERNATE	(1274-4.4)	(1574-6.0)		

- NOTES**
- MAX IAS: INITIAL : 230KT.
  - \* NO CIRCLING EAST OF RWY 18/36.
  - AWIS (PHONE) 03 6283 8607
  - COLOUR: SEE SPEC NOTICES.

Changes: DIST ALT TABLE, FAF ALT, Editorial.

SRNGN02-176