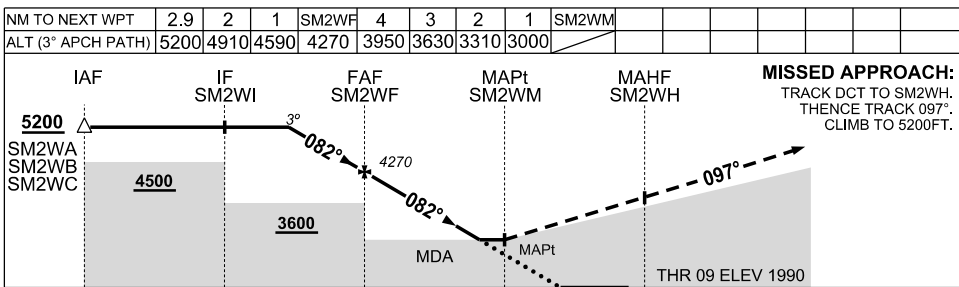
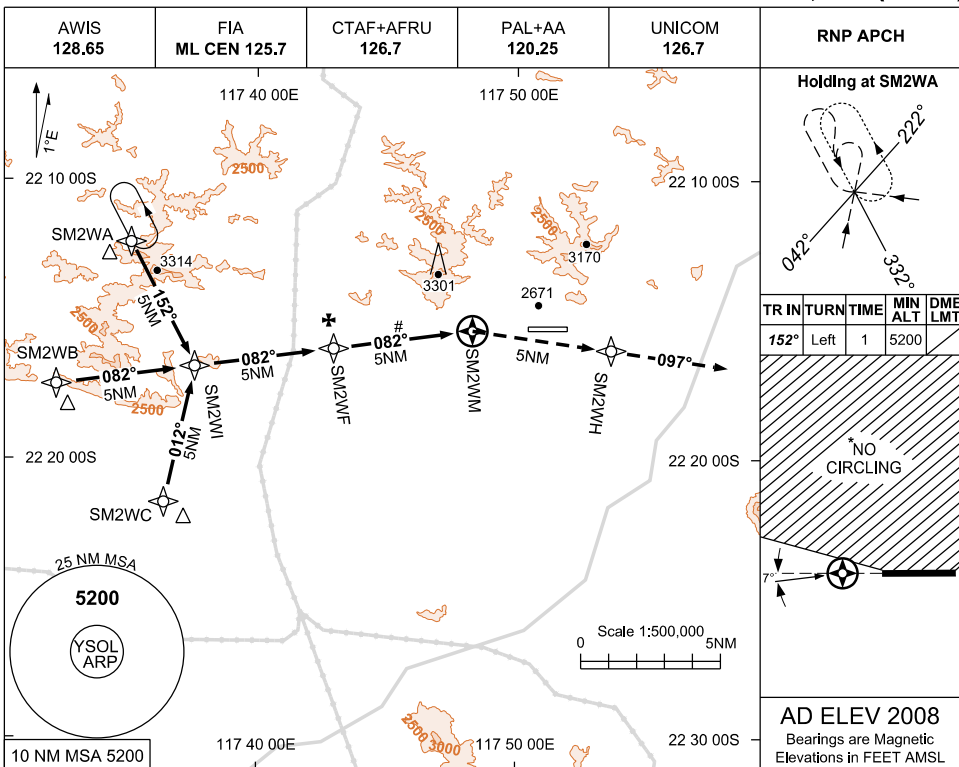


USE QNH

RNP RWY 09  
SOLOMON, WA (YSOL)

30 NOV 2023



**NOTES**

1. MAX IAS:  
INITIAL 210KT.
2. AFRU NOT AVBL ON GND
- \*3. NO CIRCLING NORTH OF RWY
- #4. ABANDONED DIRT STRIP APPROX 5NM WEST OF YSOL

CATEGORY	A	B	C	D
LNAV	<b>3000</b> (1010 - 5.0)			<b>NOT AUTHORISED</b>
CIRCLING*	<b>3000</b> (992 - 2.4)		<b>3610</b> (1602 - 4.0)	
ALTERNATE	(1492 - 4.4)		(2102 - 6.0)	

Changes: CHART TITLE, EDITORIAL

SOLGN01-177