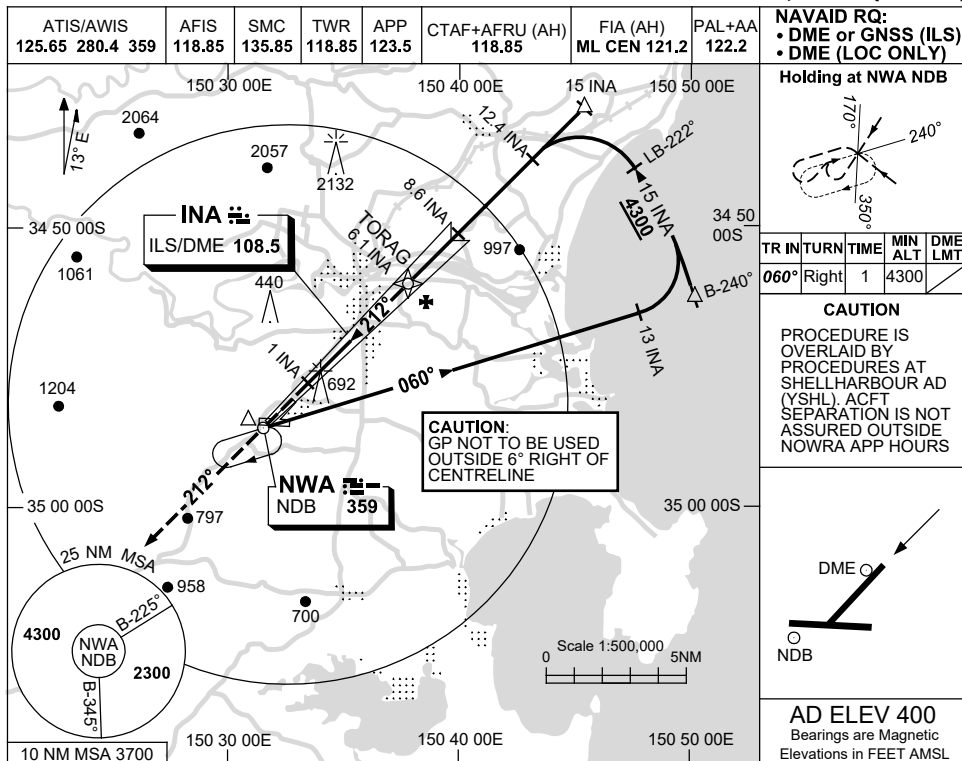


USE QNH

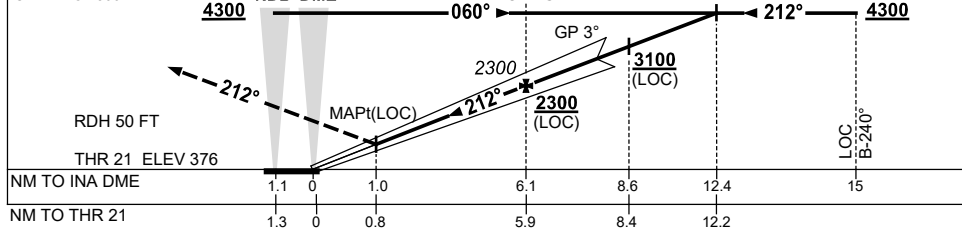
ILS-Z or LOC-Z RWY 21  
**NOWRA, NSW (YSNW)**

21 MAR 2024



NM TO INA DME	1.8	2	3	4	5	6.1	7	8	9	10	11	12	12.4
ALT (3° APCH PATH)	930	1000	1320	1640	1960	2300	2590	2910	3230	3550	3870	4180	4300

**MISSED APPROACH:**  
 TRACK 212°  
 CLIMB TO 4300ft.



**NOTES**

CATEGORY	A	B	C	D
S-I ILS/DME*		700 (324)	1.1 (VIS 0.8 WITH ACTUAL QNH)	
S-I LOC/DME		930 (554-2.4)		
CIRCLING	1320 (920-2.4)	1680 (1280-4.0)	1810 (1410-5.0)	
ALTERNATE	(1420-4.4)	(1780-6.0)	(1910-7.0)	

1. ACFT MAY BE RADAR VECTORED TO FNA.

\*2. AT DA, RAD ALT WILL INDICATE APPROX 400ft WHEN FCST QNH USED, DUE TO TERRAIN.

Changes: VIS.

SNWII01-178