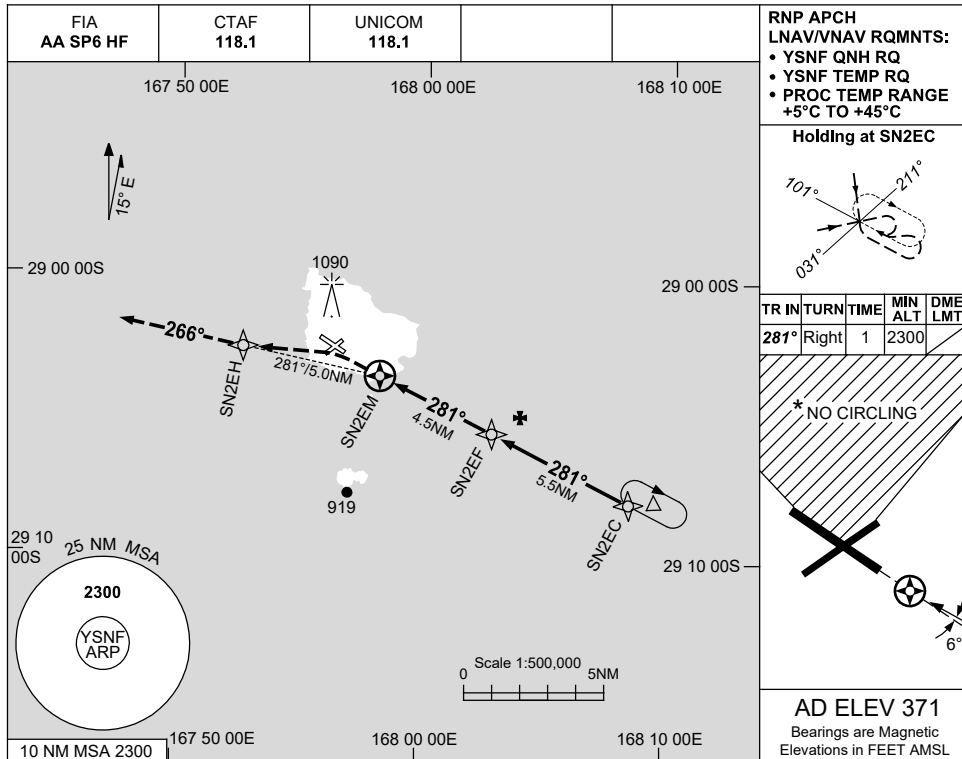


USE QNH

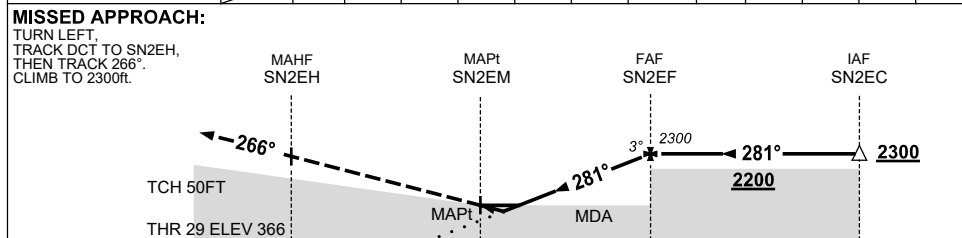
RNP Y RWY 29

20 MAR 2025

NORFOLK ISLAND, (YSNF)



NM TO NEXT WPT	SN2EM	0.3	0.6	1	2	3	4	SN2EF				
ALT (3° APCH PATH)		990	1070	1210	1530	1850	2170	2300				



**NOTES**

1. MAX IAS:  
 INITIAL : 210KT  
 MISSED APCH : 200KT  
 TURN : 200KT
2. NO CIRCLING IN SECTOR N OF RWYS 04 / 22 AND RWYS 11 / 29.
3. AWIS (PHONE) 02 9353 6443

CATEGORY	A	B	C	D
LNAV/VNAV	<b>990 (624-3.5)</b>			
LNAV	<b>1070 (699-4.0)</b>			
CIRCLING	<b>1100 (729-2.4)</b>	<b>1160 (789-4.0)</b>	<b>1480 (1109-5.0)</b>	
ALTERNATE	<b>(1229-4.4)</b>	<b>(1289-6.0)</b>	<b>(1609-7.0)</b>	

Changes: WPT NAMING CONVENTION, Editorial.

SNFGN05-182