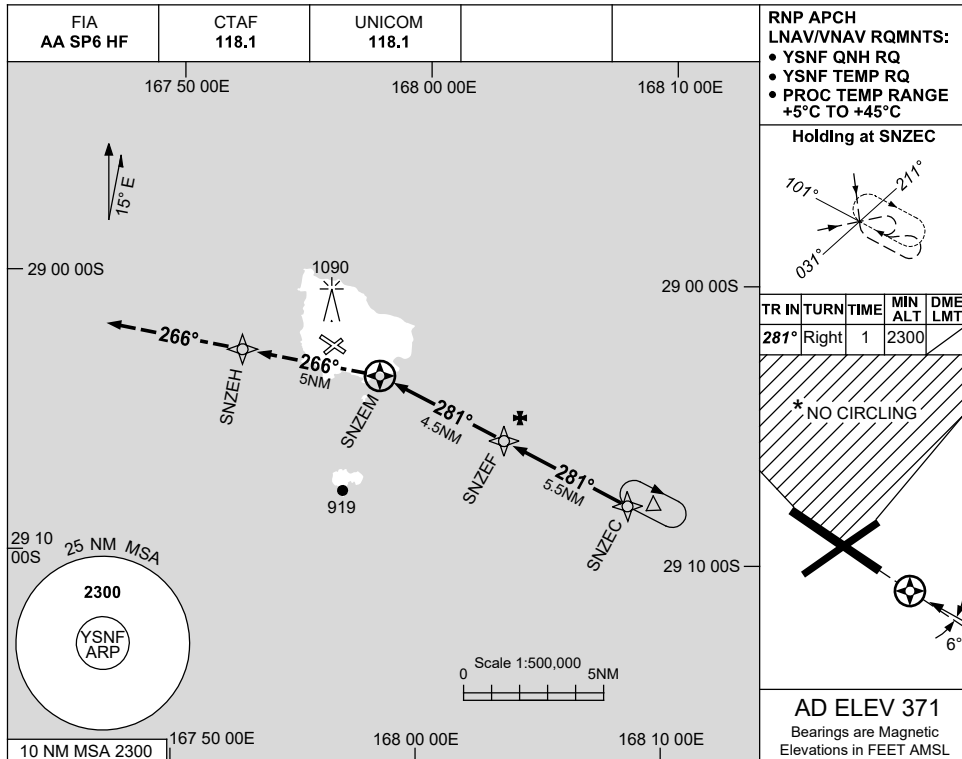


USE QNH

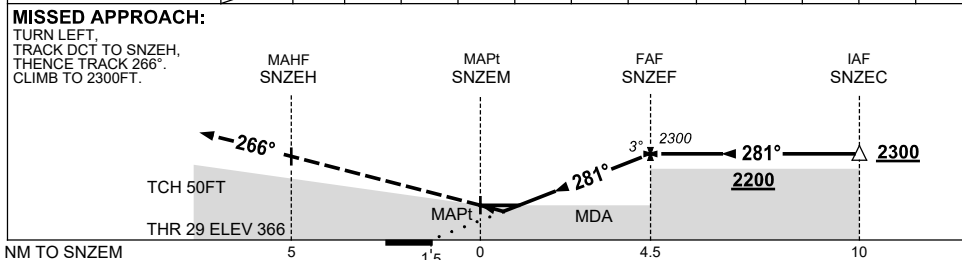
RNP Y RWY 29

15 JUN 2023

NORFOLK ISLAND, (YSNF)



NM TO NEXT WPT	SNZEM	0.3	0.6	1	2	3	4	SNZEF				
ALT (3° APCH PATH)		990	1070	1210	1530	1850	2170	2300				



NOTES

CATEGORY	A	B	C	D
LNAV/VNAV	990 (624-3.5)			
LNAV	1070 (699-4.0)			
CIRCLING	1100 (729-2.4)	1160 (789-4.0)	1480 (1109-5.0)	
ALTERNATE	(1229-4.4)	(1289-6.0)	(1609-7.0)	

1. MAX IAS: INITIAL : 210KT
MAP TURN: 200KT
* 2. NO CIRCLING IN SECTOR N OF RWYS 04/22 & 11/29.
3. AWIS (PHONE) 02 9353 6443

Changes: TWR ELEVATION.

SNFGN05-175