

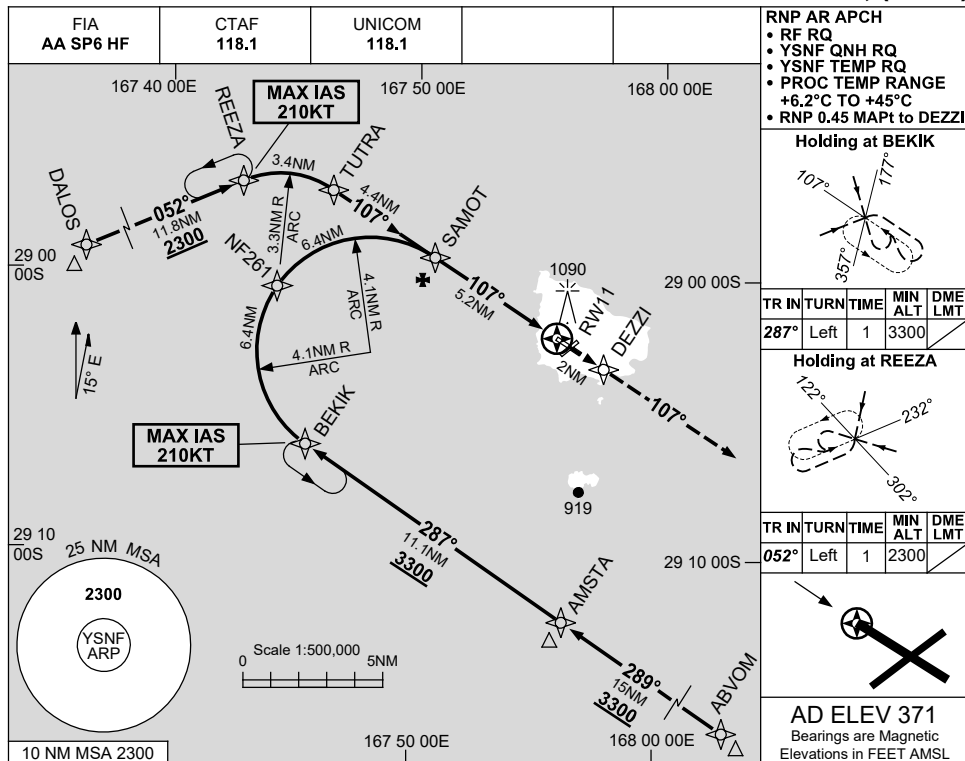
FOR CASA APPROVED OPERATORS ONLY

USE QNH

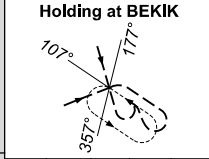
RNP X RWY 11 (AR)

NORFOLK ISLAND, (YSNF)

13 JUN 2024



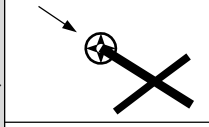
- RNP AR APCH
- RF RQ
 - YSNF QNH RQ
 - YSNF TEMP RQ
 - PROC TEMP RANGE +6.2°C TO +45°C
 - RNP 0.45 MAPt to DEZZI



| TR | IN | TURN | TIME | MIN ALT | DME LMT |
|------|------|------|------|---------|---------|
| 287° | Left | 1 | 3300 | | |

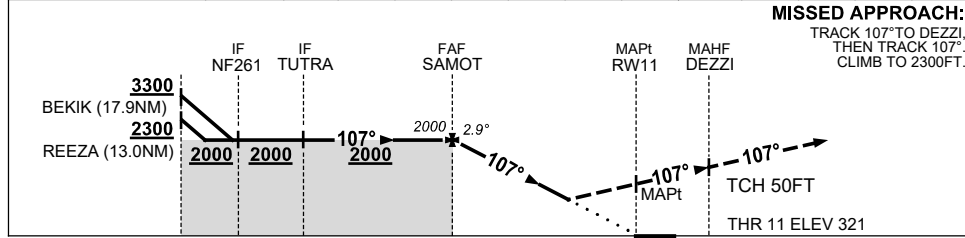


| TR | IN | TURN | TIME | MIN ALT | DME LMT |
|------|------|------|------|---------|---------|
| 052° | Left | 1 | 2300 | | |



AD ELEV 371
Bearings are Magnetic
Elevations in FEET AMSL

| DIST TO NEXT WPT | SAMOT | 5 | 4 | 3 | 2 | 1.7 | 1.4 | 1 | RW11 |
|----------------------|-------|------|------|------|-----|-----|-----|-----|------|
| ALT (2.9° APCH PATH) | 2000 | 1910 | 1600 | 1300 | 990 | 890 | 800 | 690 | |



| CATEGORY | A | B | C | D |
|-----------|----------------|---------------|------------|------------|
| RNP(0.3) | | 890 (569-3.3) | | |
| RNP(0.2) | | 800 (479-2.8) | | |
| RNP(0.1) | | 690 (369-2.1) | | |
| CIRCLING | NOT AUTHORISED | | | |
| ALTERNATE | (1129-4.4) | | (1189-6.0) | (1509-7.0) |

- NOTES**
- MAX IAS:
BEKIK : 210KT.
REEZA : 210KT.
 - APCH PATH ANGLE DOES NOT COINCIDE WITH PAPI ON GLIDE SLOPE INDICATION.
 - AWIS (PHONE)
02 9353 6443

Changes: TUTRA REPLACES PINKY, BEKIK REPLACES BECKY.

SNFGN01-179