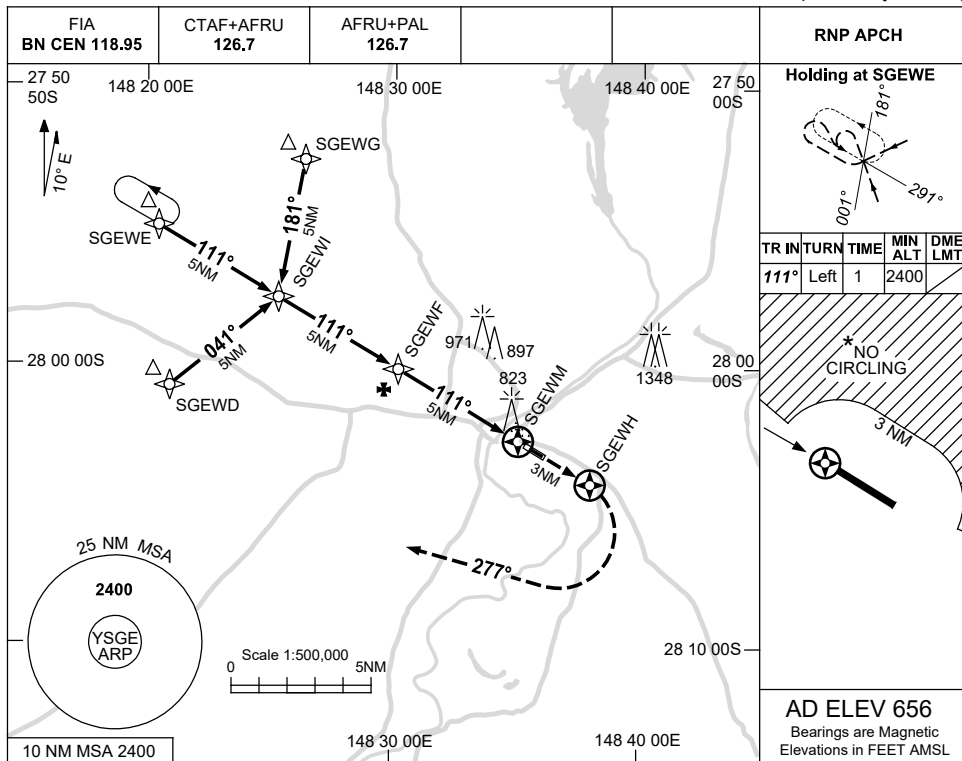


USE QNH

RNP RWY 11

SAINT GEORGE, QLD (YSGE)

16 JUN 2022

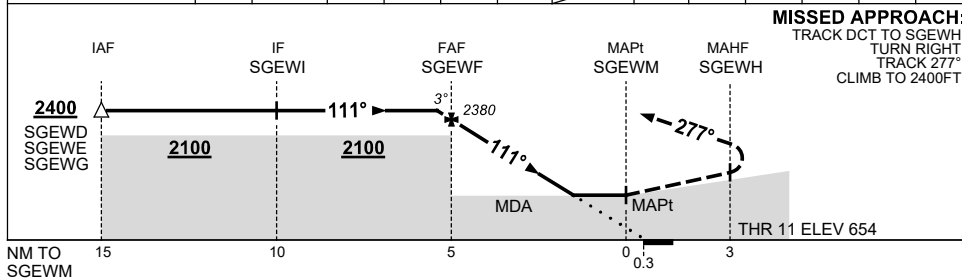


Holding at SGEWE

| TR | IN TURN | TIME | MIN ALT | DME LMT |
|------|---------|------|---------|---------|
| 111° | Left | 1 | 2400 | |

AD ELEV 656
Bearings are Magnetic
Elevations in FEET AMSL

| NM TO NEXT WPT | 0.1 | SGEWF | 4 | 3 | 2 | 1.3 | SGEWM | | | | | | |
|--------------------|------|-------|------|------|------|------|-------|--|--|--|--|--|--|
| ALT (3° APCH PATH) | 2400 | 2380 | 2070 | 1750 | 1430 | 1210 | | | | | | | |



NOTES

| CATEGORY | A | B | C | D |
|-----------|----------------|---|----------------|----------------|
| LNAV | 1210 (554-3.1) | | | NOT APPLICABLE |
| CIRCLING* | 1250 (594-2.4) | | 1350 (694-4.0) | |
| ALTERNATE | (1094-4.4) | | (1194-6.0) | |

- MAX IAS: INITIAL : 230KT.
- NO CIRCLING BEYOND 3NM NORTH OF RWY 11/29.

Changes: CHART TITLE, PBN SPECIFICATION BOX.

SGEGN01-171