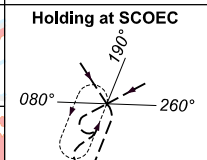
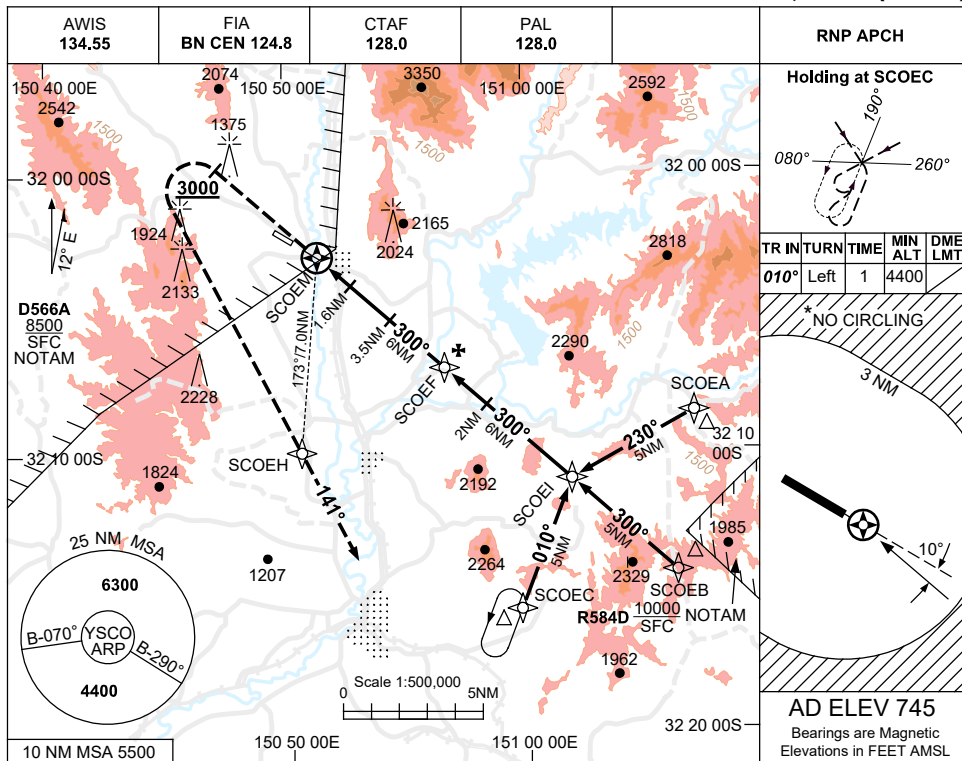


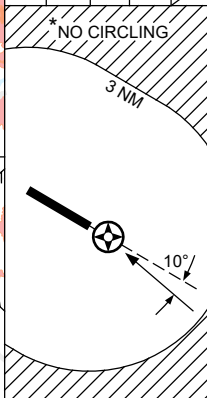
USE QNH

RNP RWY 29
SCONE, NSW (YSCO)

30 NOV 2023

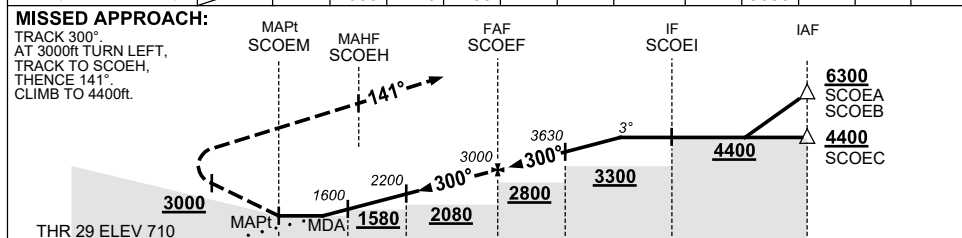


TR	IN	TURN	TIME	MIN ALT	DME LMT
010°	Left	1	4400		



AD ELEV 745
 Bearings are Magnetic
 Elevations in FEET AMSL

NM TO NEXT WPT	SCOEM	1.5	1.6	2	3.5	4	5	SCOEF	1	2	3	4.4
ALT (3° APCH PATH)		1580	1600	1720	2200	2360	2680	3000	3320	3630	3950	4400



CATEGORY	A		B		C		D	
	1580 (870-5.0)		2040 (1295-2.4)		2530(1785-4.0)		NOT APPLICABLE	
LNAV	1580 (870-5.0)		2040 (1295-2.4)		2530(1785-4.0)		NOT APPLICABLE	
CIRCLING *	2040 (1295-2.4)		2530(1785-4.0)		2530(1785-4.0)		NOT APPLICABLE	
ALTERNATE	(1795-4.4)		(1795-4.4)		(2285-6.0)		NOT APPLICABLE	

- NOTES**
- MAX IAS: INITIAL : 210KT. MAP TURN: 200KT.
 - NO CIRCLING BEYOND 3NM.
 - CLR MAY BE RQD. WHEN R584D ACT. (WLM APP 135.7)
 - COLOUR: SEE SPEC NOTICES.

Changes: R584D REPLACES R583B, ADDED D566A, NOTES, Editorial. SCOGN01-177