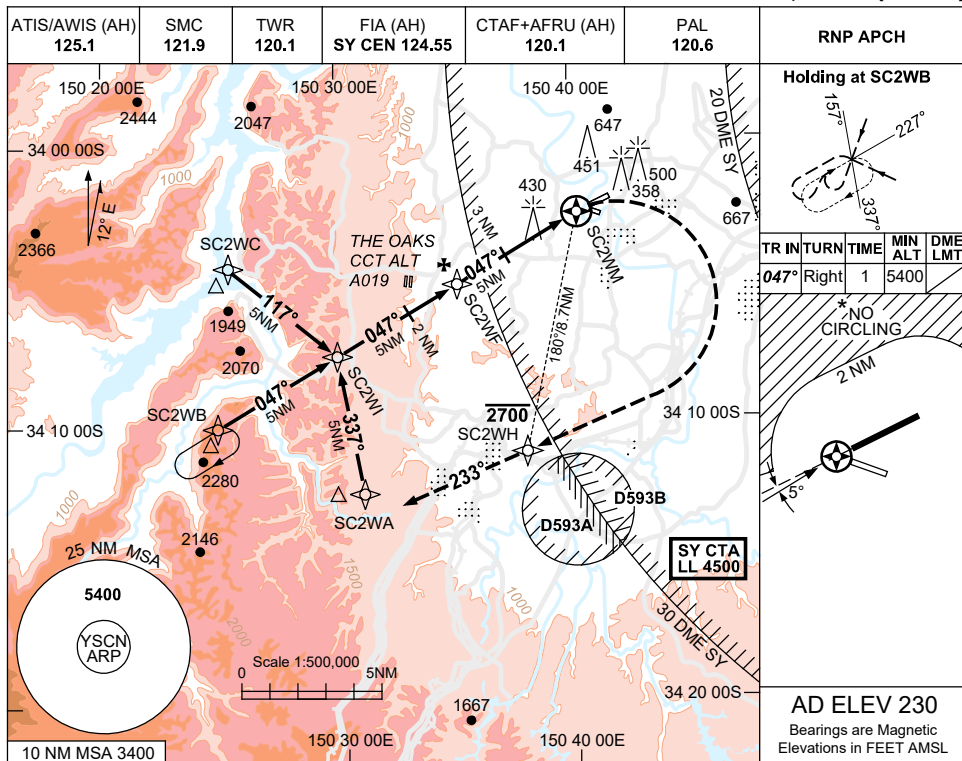


USE QNH

RNP W

1 DEC 2022

**CAMDEN, NSW (YSCN)**



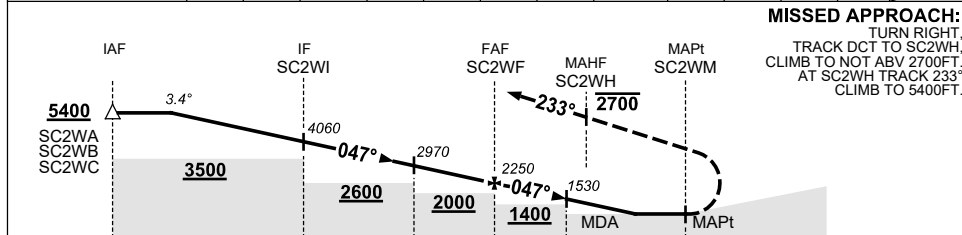
**Holding at SC2WB**

TR	IN	TURN	TIME	MIN ALT	DME LMT
047°	Right		1	5400	

**\*NO CIRCLING**

**AD ELEV 230**  
Bearings are Magnetic  
Elevations in FEET AMSL

NM TO NEXT WPT	3.7	2	SC2WI	4	3	2	1	SC2WF	4	3	2.8	1.7	SC2WWM
ALT(3.4° APCH PATH)	5400	4780	4060	3700	3340	2970	2610	2250	1890	1530	1480	1060	



**NOTES**

- MAX IAS:  
INITIAL : 210KT.  
MAP TURN:195KT.
- \*NO CIRCLING NTH OF RWY 06/24 BEYOND 2NM.
- ACFT TO CALL CN TWR PRIOR TO SC2WI.
- TRAINING RESTR: SEE ERSA.
- COLOUR: SEE SPEC NOTICES.

CATEGORY	A	B	C	D
CIRCLING *	1060 (830-2.4)		1480(1250-4.0)	
ALTERNATE	(1330-4.4)		(1750-6.0)	

**NOT APPLICABLE**

Changes: WPT NAMING CONVENTION, MAP SPEED, MAHF ALT RESTRICTION, Editorial.

SCNGN01-173