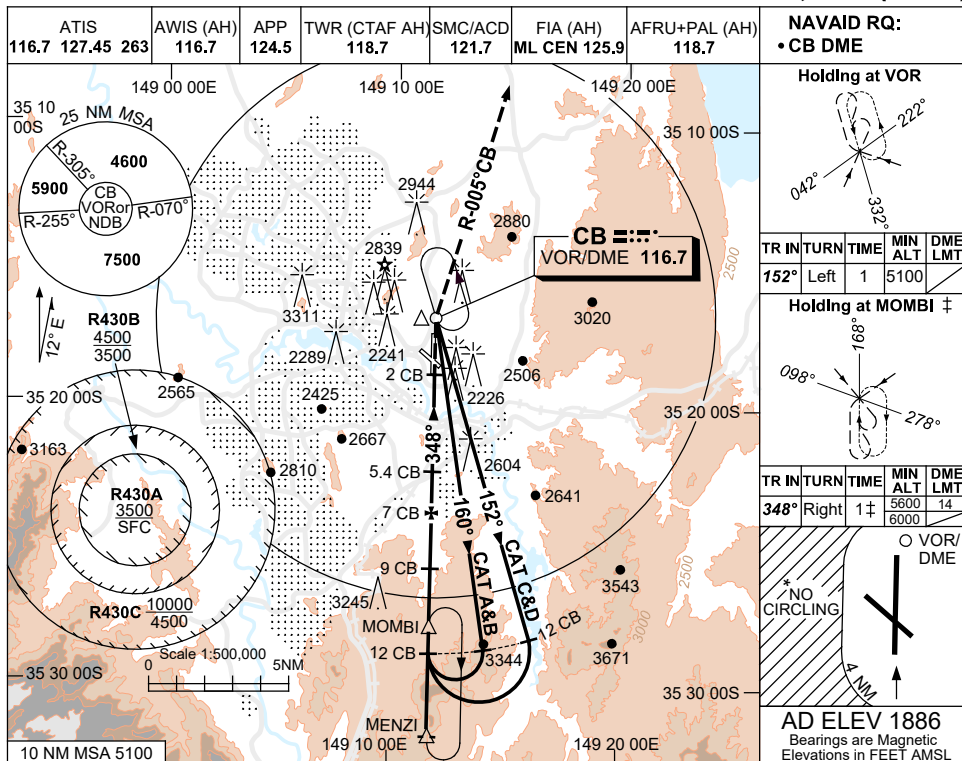


USE QNH

VOR RWY 35
CANBERRA, ACT (YSCB)

30 NOV 2023



NAVAID RQ:
• CB DME

Holding at VOR

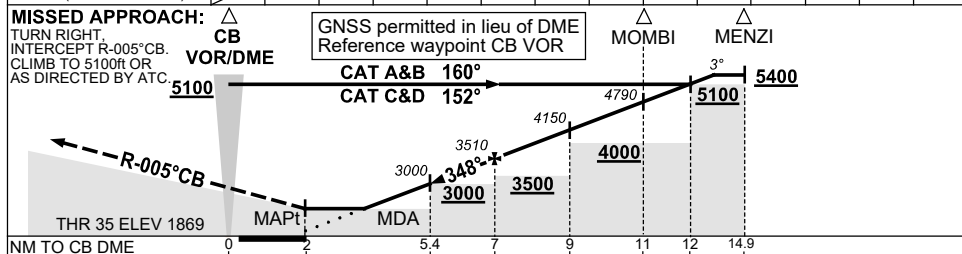
TR	TURN	TIME	MIN ALT	DME LMT
152°	Left	1	5100	

Holding at MOMBI ‡

TR	TURN	TIME	MIN ALT	DME LMT
348°	Right	1 ‡	5600 6000	14

AD ELEV 1886
Bearings are Magnetic
Elevations in FEET AMSL

DIST TO CB DME	MAPt	5	5.4	6	7	8	9	10	11	12	12.9
ALT (3° APCH PATH)		2880	3000	3190	3510	3830	4150	4470	4790	5100	5400



NOTES

- ‡1. MAX IAS:
HLDG AT MOMBI
5600ft: 170KT.
6000ft: 210KT.
MAP TURN: 230KT.
- *2. NO CIRCLING
BEYOND 4NM WEST OF
RWY 17/35.
- 3. ACFT MAY BE RADAR
VECTORED TO IAF.
- 4. COLOUR: SEE
SPEC NOTICES.

CATEGORY	A	B	C	D
S-I VOR/DME	2880 (1011-4.9)			
CIRCLING *	3350 (1464-2.4)	3580 (1694-4.0)	3720 (1834-5.0)	
ALTERNATE	(1964-4.4)	(2194-6.0)	(2334-7.0)	

Changes: MINIMA, SDF, MOMBI HOLDING, NEW LOGO, Editorial.

SCBVO02-177