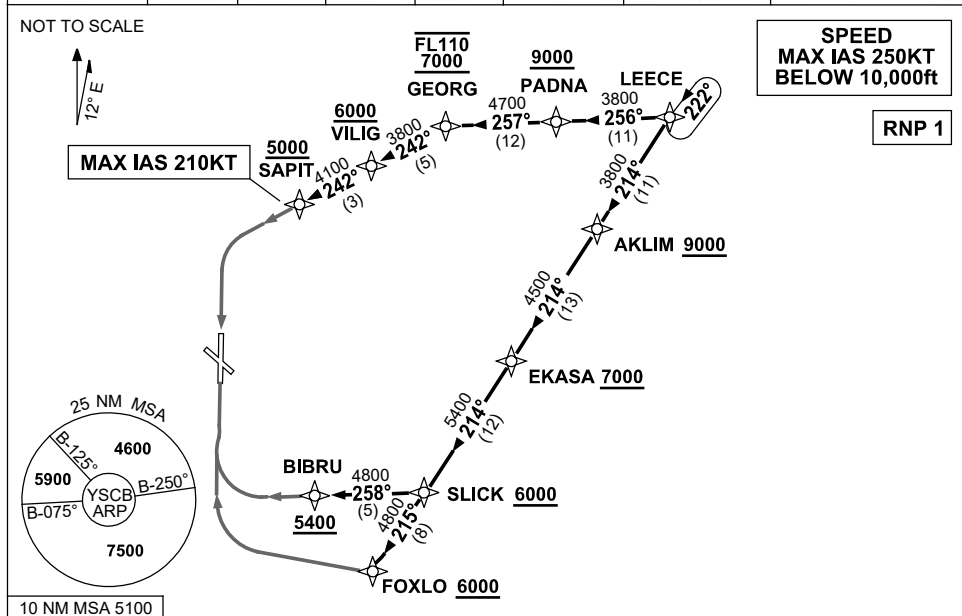


**STANDARD ARRIVAL ROUTE (STAR)  
LEECE ONE WHISKEY, YANKEE ARRIVALS (JET) (RNAV)  
CANBERRA, ACT (YSCB)**

**13 JUN 2024**

ATIS 116.7 127.45 263	AWIS (AH) 116.7	APP 124.5	TWR 118.7	SMC/ACD 121.7	FIA (AH) ML CEN 125.9	CTAF+AFRU (AH) AFRU+PAL (AH) 118.7	Bearings are Magnetic Elevations in FEET AMSL
--------------------------	--------------------	--------------	--------------	------------------	--------------------------	--	--



**ARRIVAL: LEECE ONE**

**RWY 17 YANKEE:**

- From LEECE track 256° to PADNA  
**Cross** PADNA AT or ABV 9000ft
- Turn RIGHT, track 257° to GEORG  
**Cross** GEORG BTN 7000ft and FL110
- Turn LEFT, track 242° to VILIG  
**Cross** VILIG AT or ABV 6000ft
- Track 242° to SAPIT  
**Cross** SAPIT AT or ABV 5000ft  
**MAX IAS** 210KT from SAPIT
- Track via RNP Y RWY 17 (AR) approach

**RWY 35 YANKEE:**

- From LEECE track 214° to AKLIM  
**Cross** AKLIM AT or ABV 9000ft
- Track 214° to EKASA  
**Cross** EKASA AT or ABV 7000ft
- Track 214° to SLICK  
**Cross** SLICK AT or ABV 6000ft
- Turn RIGHT track 258° to BIBRU  
**Cross** BIBRU AT or ABV 5400ft
- Track via RNP Y RWY 35 (AR)

**RWY 35 WHISKEY:**

- From LEECE track 214° to AKLIM  
**Cross** AKLIM AT or ABV 9000ft
- Track 214° to EKASA  
**Cross** EKASA AT or ABV 7000ft
- Track 214° to SLICK  
**Cross** SLICK AT or ABV 6000ft
- Turn RIGHT, track 215° to FOXLO  
**Cross** FOXLO AT or ABV 6000ft
- Track via RNP W RWY 35 (AR) approach

**COMMUNICATIONS FAILURE: PROCEDURE IN IMC**

- Squawk 7600, comply with vertical navigation requirements, but not below MSA.
- Track via the latest STAR clearance to the nominated runway, then fly the most suitable approach in accordance with ERS A EMERG Section 1.5.

Changes: WPT RAZZI RENAMED LEECE, PROC NAME, VALIDITY INDICATOR.

SCBSR13-179