

**STANDARD ARRIVAL ROUTE (STAR)
LEECE ONE VICTOR ARRIVAL (JET) (RNAV)
CANBERRA, ACT (YSCB)**

13 JUN 2024

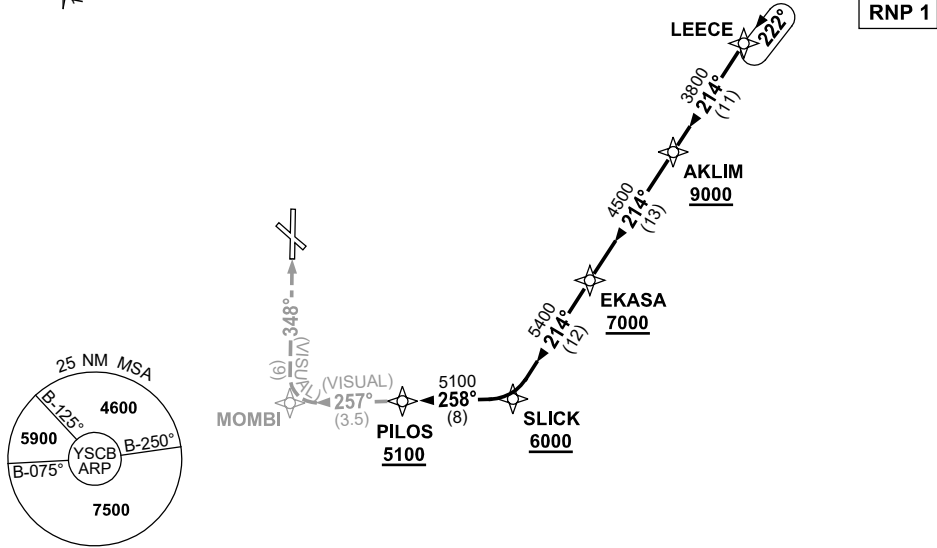
ATIS 116.7 127.45 263	AWIS (AH) 116.7	APP 124.5	TWR 118.7	SMC/ACD 121.7	FIA (AH) ML CEN 125.9	CTAF+AFRU (AH) AFRU+PAL (AH) 118.7	Bearings are Magnetic Elevations in FEET AMSL
--------------------------	--------------------	--------------	--------------	------------------	--------------------------	------------------------------------------	--------------------------------------------------

NOT TO SCALE



**SPEED
MAX IAS 250KT
BELOW 10,000ft**

RNP 1



10 NM MSA 5100

ARRIVAL: LEECE ONE

**RWY 35 VICTOR:
(DAY ONLY)**

- From LEECE track 214° to AKLIM
Cross AKLIM AT or ABV 9000ft
- Track 214° to EKASA
Cross EKASA AT or ABV 7000ft
- Track 214° to SLICK
Cross SLICK AT or ABV 6000ft
- Turn RIGHT, track 258° to PILOS
Cross PILOS AT or ABV 5100ft
- Turn LEFT, track 257° VISUAL to MOMPI
- Turn RIGHT, intercept VISUAL final RWY 35

COMMUNICATIONS FAILURE: PROCEDURE IN IMC

- Squawk 7600, comply with vertical navigation requirements, but not below MSA.
- Track via the latest STAR clearance to the nominated runway, then fly the most suitable approach in accordance with ERSA EMERG Section 1.5.

Changes: WPT RAZZI RENAMED LEECE, PROC NAME, VALIDITY INDICATOR.

SCBSR11-179