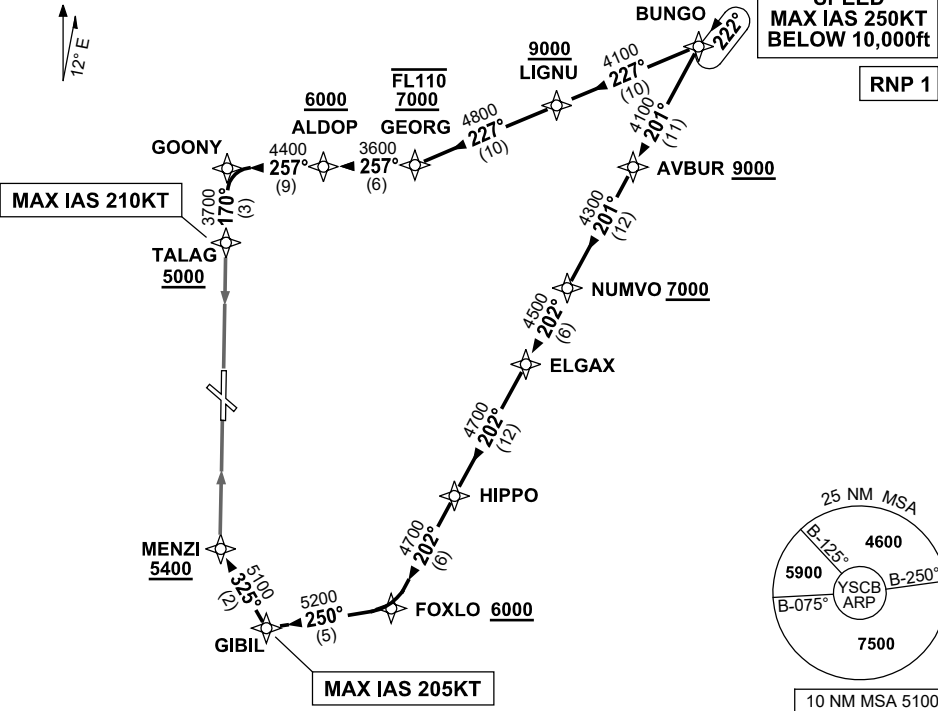


**STANDARD ARRIVAL ROUTE (STAR)  
BUNGO FIVE ALPHA ARRIVAL (NON-JET) (RNAV)  
CANBERRA, ACT (YSCB)**

**7 SEP 2023**

ATIS 116.7 127.45 263	AWIS (AH) 116.7	APP 124.5	TWR 118.7	SMC/ACD 121.7	FIA (AH) ML CEN 125.9	CTAF+AFRU (AH) AFRU+PAL (AH) 118.7	Bearings are Magnetic Elevations in FEET AMSL
--------------------------	--------------------	--------------	--------------	------------------	--------------------------	------------------------------------------	--------------------------------------------------

NOT TO SCALE



**ARRIVAL: BUNGO FIVE ALPHA**

**RWY 17:**

- From BUNGO track 227° to LIGNU  
**Cross** LIGNU AT or ABV 9000ft
- Track 227° to GEORG  
**Cross** GEORG BTN 7000ft and FL110
- Turn RIGHT, track 257° to ALDOP  
**Cross** ALDOP AT or ABV 6000ft
- Track 257° to GOONY
- Turn LEFT, track 170° to TALAG  
**Cross** TALAG AT or ABV 5000ft  
**MAX IAS 210KT** from TALAG
- Track via RNP W RWY 17 (AR) or VOR RWY 17 approach

**RWY 35:**

- From BUNGO track 201° to AVBUR  
**Cross** AVBUR AT or ABV 9000ft
- Track 201° to NUMVO  
**Cross** NUMVO AT or ABV 7000ft
- Turn RIGHT, track 202° to ELGAX
- Track 202° to HIPPO
- Track 202° to FOXLO  
**Cross** FOXLO AT or ABV 6000ft
- Turn RIGHT, track 250° to GIBIL  
**MAX IAS 205KT** from GIBIL
- Turn RIGHT, track 325° to MENZI  
**Cross** MENZI AT or ABV 5400ft
- Track via ILS, RNP Z, LOC or VOR RWY 35 approach.

**COMMUNICATIONS FAILURE: PROCEDURE IN IMC**

- Squawk 7600, comply with vertical navigation requirements, but not below MSA.
- Track via the latest STAR clearance to the nominated runway, then fly the most suitable approach in accordance with ERSAs EMERG Section 1.5.

Changes: REVISED PROC.

SCBSR10-176