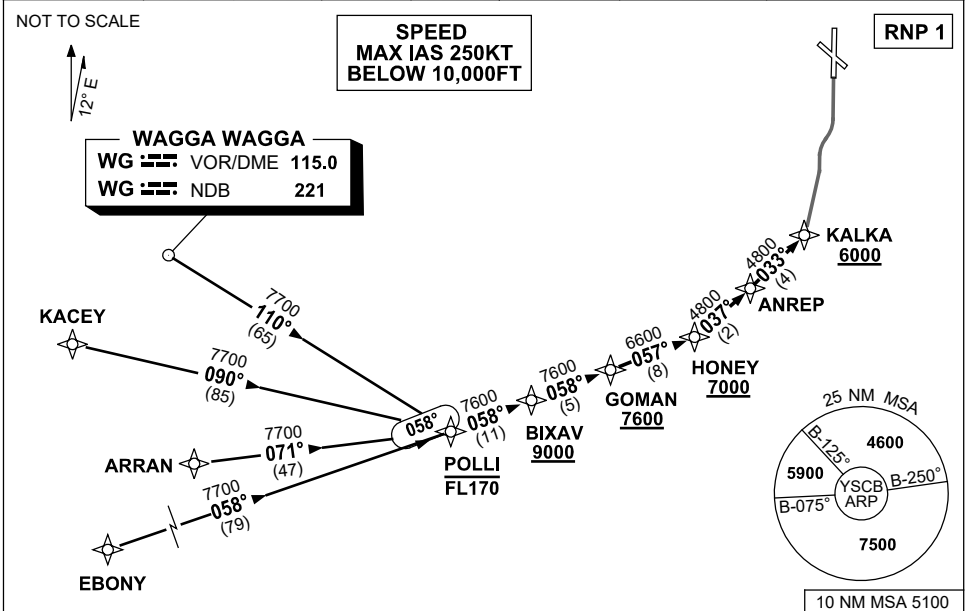


**STANDARD ARRIVAL ROUTE (STAR)  
POLLI NINE X-RAY ARRIVAL (RNAV)  
CANBERRA, ACT (YSCB)**

7 SEP 2023

ATIS 116.7 127.45 263	AWIS (AH) 116.7	APP 124.5	TWR 118.7	SMC/ACD 121.7	FIA (AH) ML CEN 125.9	CTAF+AFRU (AH) AFRU+PAL (AH) 118.7	Bearings are Magnetic Elevations in FEET AMSL
--------------------------	--------------------	--------------	--------------	------------------	--------------------------	--	--



**TRANSITIONS:**

- WAGGA:** From WG VOR or NDB to POLLI:  
(WG)
- Track 110° to POLLI
  - Then follow ARRIVAL instructions
- KACEY:** From KACEY to POLLI:
- Track 090° to POLLI
  - Then follow ARRIVAL instructions

- ARRAN:** From ARRAN to POLLI:
- Track 071° to POLLI
  - Then follow ARRIVAL instructions
- EBONY:** From EBONY to POLLI:
- Track 058° to POLLI
  - Then follow ARRIVAL instructions

**ARRIVAL:** POLLI NINE

- RWY 35 X-RAY:**
- **Cross** POLLI AT or BLW FL170
  - From POLLI track 058° to BIXAV
  - **Cross** BIXAV AT or ABV 9000ft
  - Track 058° TO GOMAN
  - **Cross** GOMAN AT or ABV 7600ft
  - Turn LEFT, track 057° TO HONEY
  - **Cross** HONEY AT or ABV 7000ft
  - Turn LEFT, track 037° TO ANREP
  - Turn LEFT, track 033° TO KALKA
  - **Cross** KALKA AT or ABV 6000ft
  - Track via RNP X RWY 35 (AR)

**COMMUNICATIONS FAILURE: PROCEDURE IN IMC**

- Squawk 7600, comply with vertical navigation requirements, but not below MSA.
- Track via the latest STAR clearance to the nominated runway, then fly the most suitable approach in accordance with ERSA EMERG Section 1.5.