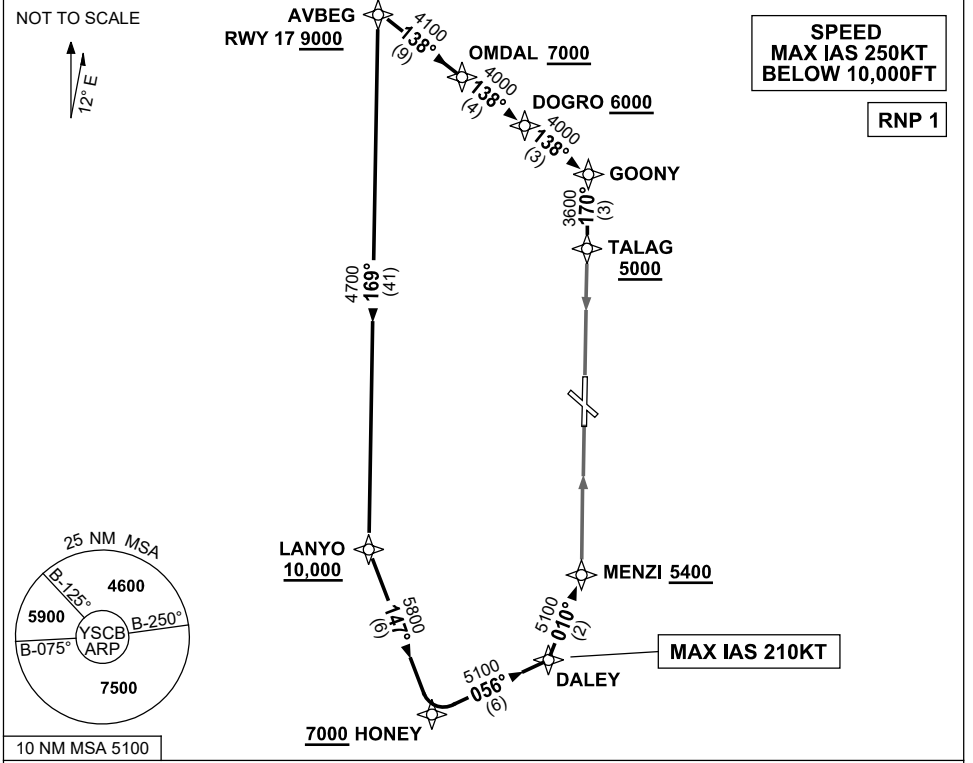


**STANDARD ARRIVAL ROUTE (STAR)
AVBEG FIVE ALPHA ARRIVAL (RNAV)
CANBERRA, ACT (YSCB)**

7 SEP 2023

| | | | | | | | |
|--------------------------|--------------------|--------------|--------------|------------------|--------------------------|--|--|
| ATIS 116.7 127.45 263 | AWIS (AH) 116.7 | APP 124.5 | TWR 118.7 | SMC/ACD 121.7 | FIA (AH) ML CEN 125.9 | CTAF+AFRU (AH) AFRU+PAL (AH) 118.7 | Bearings are Magnetic Elevations in FEET AMSL |
|--------------------------|--------------------|--------------|--------------|------------------|--------------------------|--|--|



ARRIVAL: AVBEG FIVE

RWY 17 ALPHA:

- **Cross** AVBEG AT or ABV 9000FT
- From AVBEG track 138° to OMDAL
- **Cross** OMDAL AT or ABV 7000FT
- Track 138° to DOGRO
- **Cross** DOGRO AT or ABV 6000FT
- Track 138° to GOONY
- Turn RIGHT, track 170° to TALAG
- **Cross** TALAG AT or ABV 5000FT
- Track via RNP W RWY 17 (AR) or VOR RWY 17 approach

RWY 35 ALPHA:

- From AVBEG track 169° to LANYO
- **Cross** LANYO AT or ABV 10,000FT
- Turn LEFT, track 147° to HONEY
- **Cross** HONEY AT or ABV 7000FT
- Turn LEFT, track 056° to DALEY
- **MAX IAS 210KT** from DALEY
- Turn LEFT, track 010° to MENZI
- **Cross** MENZI AT or ABV 5400FT
- Track via ILS, RNP Z, LOC or VOR RWY 35 approach

COMMUNICATIONS FAILURE: PROCEDURE IN IMC

- Squawk 7600, comply with vertical navigation requirements, but not below MSA.
- Track via the latest STAR clearance to the nominated runway, then fly the most suitable approach in accordance with ERSA EMERG Section 1.5.

Changes: REVISED PROC.

SCBSR05-176