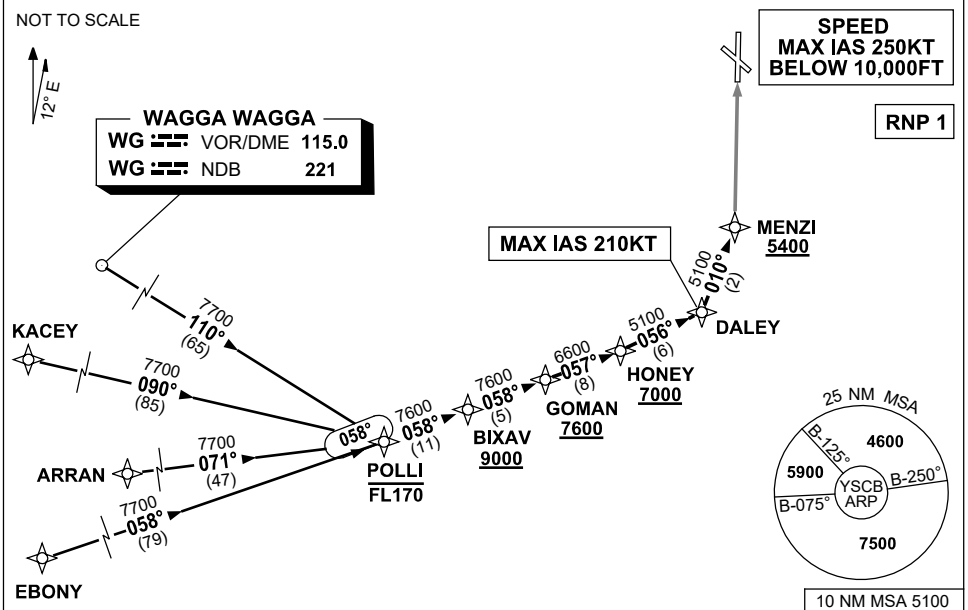


**STANDARD ARRIVAL ROUTE (STAR)
POLLI NINE ALPHA ARRIVAL (RNAV)
CANBERRA, ACT (YSCB)**

7 SEP 2023

ATIS 116.7 127.45 263	AWIS (AH) 116.7	APP 124.5	TWR 118.7	SMC/ACD 121.7	FIA (AH) ML CEN 125.9	CTAF+AFRU (AH) AFRU+PAL (AH) 118.7	Bearings are Magnetic Elevations in FEET AMSL
--------------------------	--------------------	--------------	--------------	------------------	--------------------------	--	--



TRANSITIONS:

WAGGA: From WG VOR or NDB to POLLI:
(WG)
• Track 110° to POLLI
• Then follow ARRIVAL instructions

KACEY: From KACEY to POLLI:
• Track 090° to POLLI
• Then follow ARRIVAL instructions

ARRAN: From ARRAN to POLLI:
• Track 071° to POLLI
• Then follow ARRIVAL instructions

EBONY: From EBONY to POLLI:
• Track 058° to POLLI
• Then follow ARRIVAL instructions

ARRIVAL: POLLI NINE

RWY 35 ALPHA:

- **Cross** POLLI AT or BLW FL170
- From POLLI track 058° to BIXAV
- **Cross** BIXAV AT or ABV 9000FT
- Track 058° to GOMAN
- **Cross** GOMAN AT or ABV 7600FT
- Turn LEFT, track 057° to HONEY
- **Cross** HONEY AT or ABV 7000FT

- Turn LEFT, track 056° to DALEY
MAX IAS 210KT from DALEY
- Turn LEFT, track 010° to MENZI for ILS, RNP Z, LOC, or VOR RWY 35 approach
Cross MENZI AT or ABV 5400FT

COMMUNICATIONS FAILURE: PROCEDURE IN IMC

- Squawk 7600, comply with vertical navigation requirements, but not below MSA.
- Track via the latest STAR clearance to the nominated runway, then fly the most suitable approach in accordance with ERSA EMERG Section 1.5.

Changes: REVISED PROC.

SCBSR03-176