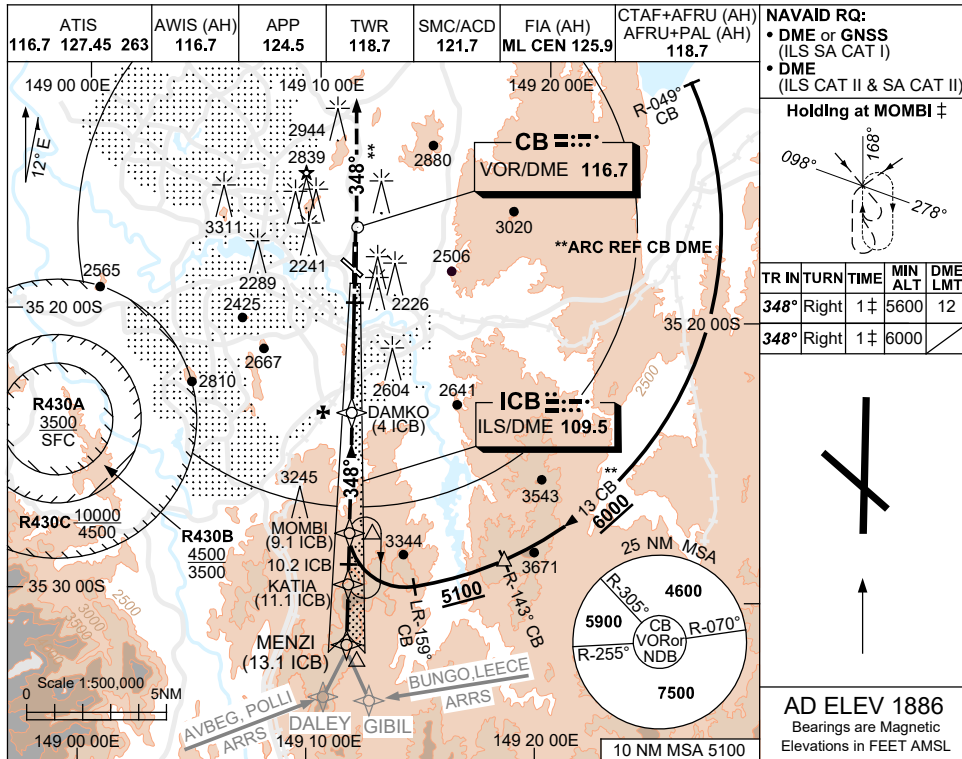


13 JUN 2024



NAVAID RQ:

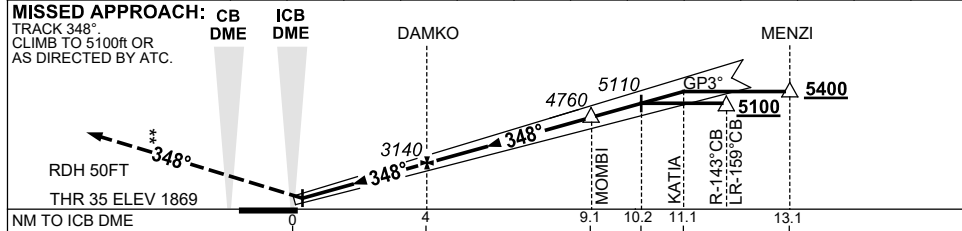
- DME or GNSS (ILS SA CAT I)
- DME (ILS CAT II & SA CAT II)

Holding at MOMBI ‡

TR IN	TURN	TIME	MIN ALT	DME LMT
348°	Right	1 ‡	5600	12
348°	Right	1 ‡	6000	

AD ELEV 1886
Bearings are Magnetic
Elevations in FEET AMSL

NM TO ICB DME	1	2	3	4	5	6	7	8	9.1	10	10.2	11	11.1
ALT (3° APCH PATH)	2200	2500	2820	3140	3460	3780	4100	4410	4760	5050	5110	5370	5400



- NOTES**
- #1. SPECIAL AIRCREW & ACFT CERTIFICATION REQUIRED.
 - #2. MAX IAS:
HLDG AT MOMBI
5600ft : 170KT.
6000ft : 210KT.
 - #3. MIN MISSED APCH
GRAD TO 3200ft,
THEN 2.5%.
 - #4. CAT A-C 350 RVR
CAT D 400RVR
 - #5. COLOUR: SEE
SPEC NOTICES.

CATEGORY	A	B	C	D
S-I ILS CAT II# (4.6% MAP) ‡	RA 101 DA 1969 (100) 350 RVR			
S-I ILS SA CAT II# (4.6% MAP) ‡	RA 101 DA 1969 (100) 350/400 RVR §			
S-I ILS SA CAT I # (3.8% MAP) ‡	RA 152 DA 2019 (150) 450 RVR			

Changes: Editorial.

SCBII03-179