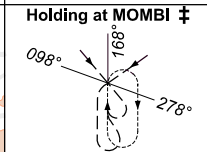
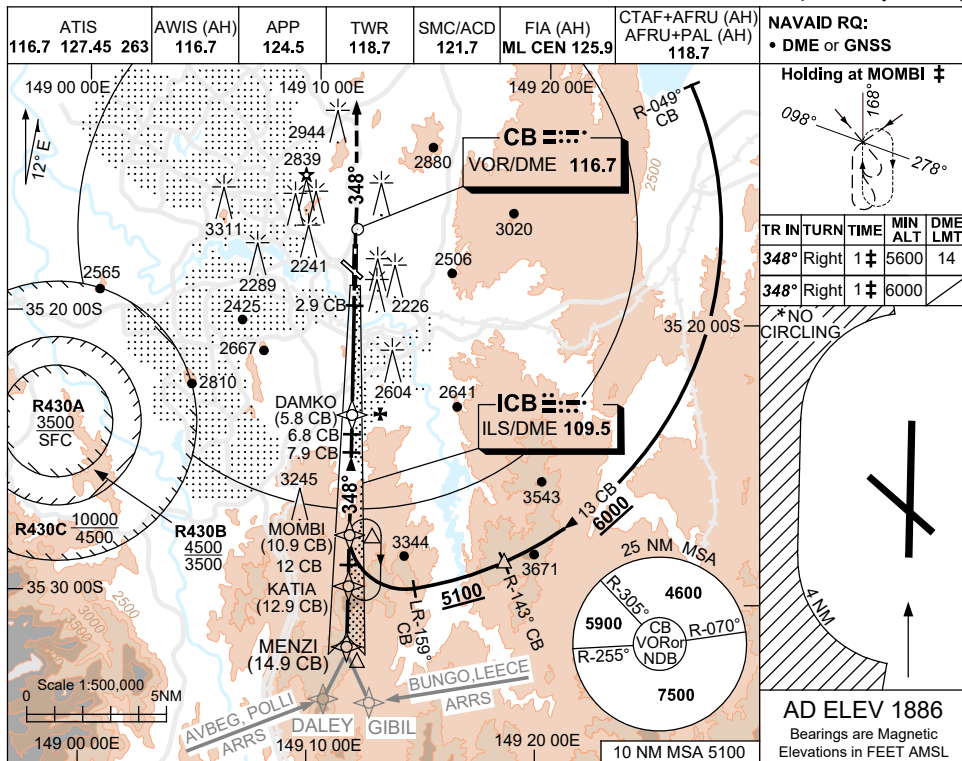


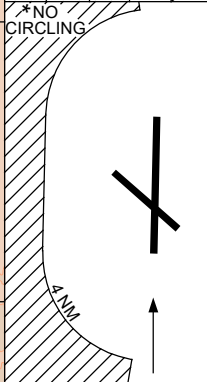
USE QNH

ILS-Y or LOC-Y RWY 35  
**CANBERRA, ACT (YSCB)**

13 JUN 2024

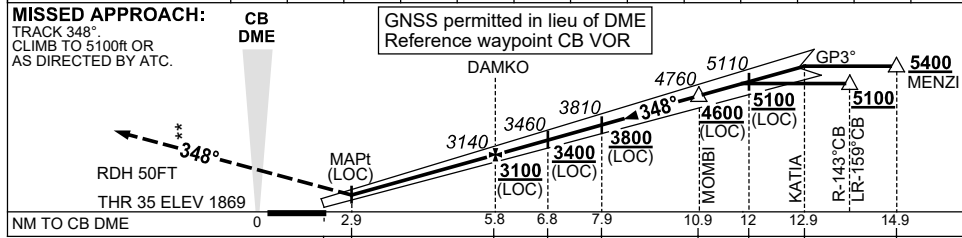


TR IN	TURN	TIME	MIN ALT	DME LMT
348°	Right	1	5600	14
348°	Right	1	6000	



**AD ELEV 1886**  
 Bearings are Magnetic  
 Elevations in FEET AMSL

NM TO CB DME	4.5	5	5.8	6.8	7	7.9	9	10	10.9	11	12	12.9
ALT (3° APCH PATH)	2700	2870	3140	3460	3510	3810	4150	4470	4760	4790	5110	5400



NM TO CB DME	0	2.9	5.8	6.8	7.9	10.9	12	12.9	14.9
NM TO THR 35	0	0.9	3.8	4.8	5.9	8.9	10	10.9	12.9

**NOTES**

- †1. MAX IAS:  
 HLDG AT MOMBI  
 5600ft : 170KT.  
 6000ft : 210KT.
- \* 2. NO CIRCLING BEYOND 4NM WEST OF RWY 17/35.
- \* 3. MIN MISSED APCH GRAD TO 3200ft, THEN 2.5%.
- 4. COLOUR: SEE SPEC NOTICES.

CATEGORY	A	B	C	D
S-I ILS CAT I (4.4% MAP) †	<b>2170</b> (301) 0.8	750 RVR (VIS 0.8 550 RVR WITH ACTUAL QNH)		
S-I ILS CAT I (2.5% MAP)	<b>2420</b> (551) 2.2	(VIS 1.6 WITH ACTUAL QNH)		
S-I LOC	<b>2700</b> (831-3.9)			
CIRCLING *	<b>3350</b> (1464-2.4)	<b>3580</b> (1694-4.0)	<b>3720</b> (1834-5.0)	
ALTERNATE	(1964-4.4)	(2194-6.0)	(2334-7.0)	

Changes: Editorial. SCBII02-179