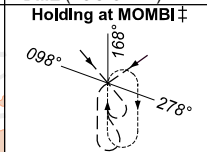
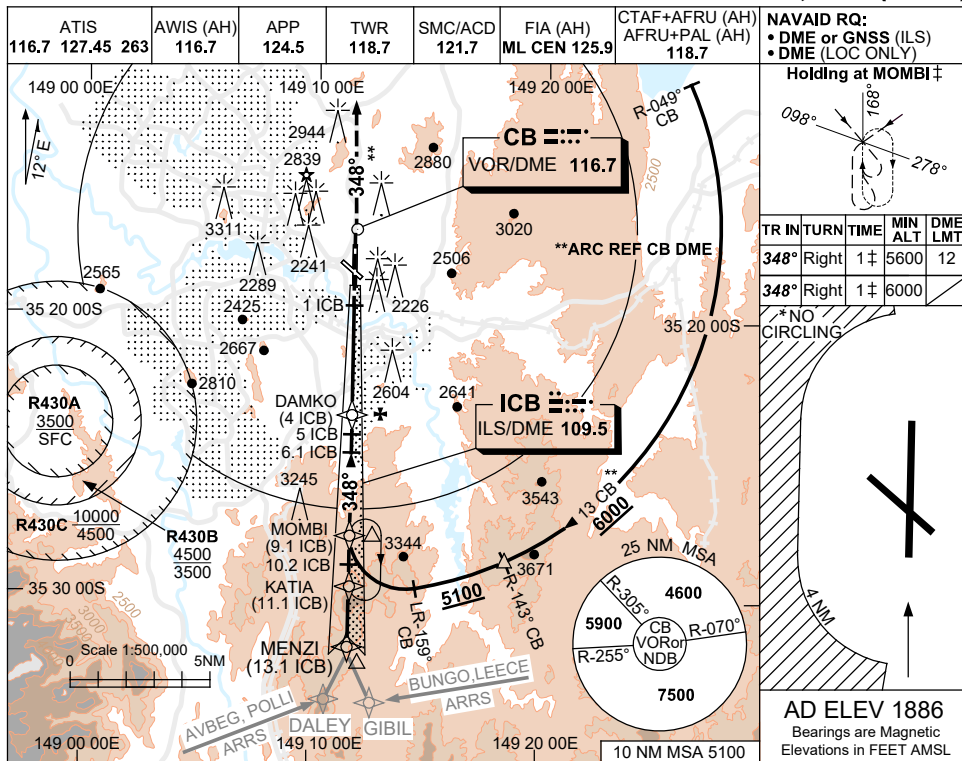
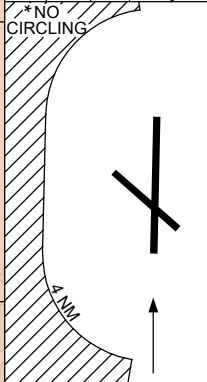


13 JUN 2024

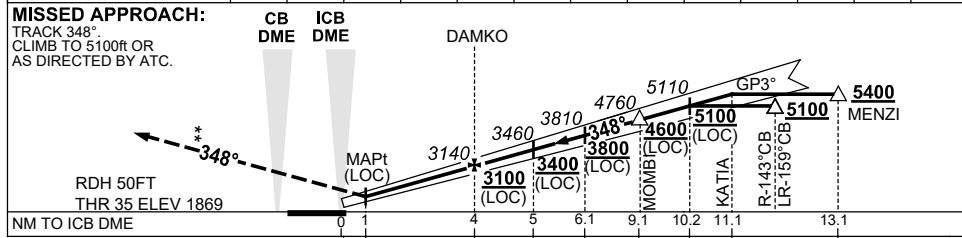


TR	TURN	TIME	MIN ALT	DME LMT
348°	Right	1 1/2	5600	12
348°	Right	1 1/2	6000	



**AD ELEV 1886**  
Bearings are Magnetic  
Elevations in FEET AMSL

NM TO ICB DME	2.6	4	5	6.1	7	8	9.1	10	10.2	11	11.1		
ALT (3° APCH PATH)	2700	3140	3460	3810	4100	4410	4760	5050	5110	5370	5400		



- NOTES**
- MAX IAS:  
HLDG AT MOMPI: 5600ft : 170KT, 6000ft : 210KT.
  - NO CIRCLING BEYOND 4NM WEST OF RWY 17/35.
  - MIN MISSED APCH GRAD TO 3200FT, THEN 2.5%.
  - COLOUR: SEE SPEC NOTICES.

CATEGORY	A	B	C	D
S-I ILS CAT I (4.4% MAP) ‡	2170 (301) 0.8	750 RVR (VIS 0.8 550 RVR WITH ACTUAL QNH)		
S-I ILS CAT I (2.5% MAP)	2420 (551) 2.2	(VIS 1.6 WITH ACTUAL QNH)		
S-I LOC	2700 (831-3.9)			
CIRCLING *	3350 (1464-2.4)	3580 (1694-4.0)	3720 (1834-5.0)	
ALTERNATE	(1964-4.4)	(2194-6.0)	(2334-7.0)	

Changes: Editorial. SCBI01-179