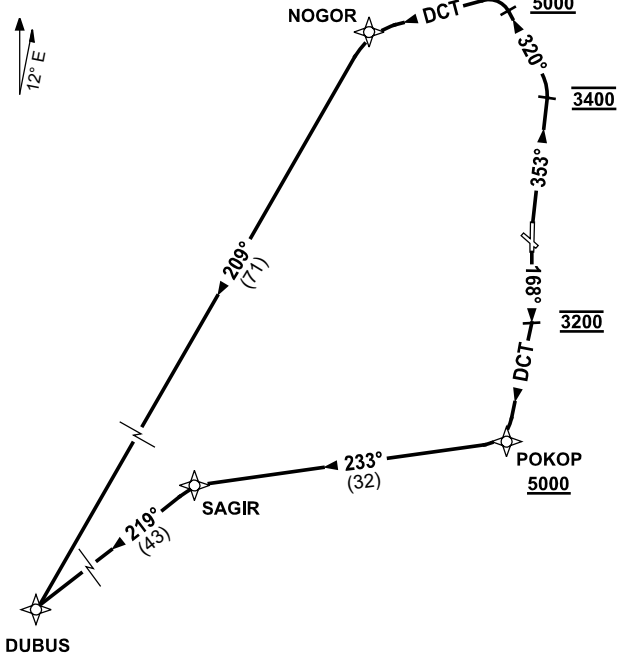


STANDARD INSTRUMENT DEPARTURES (SID)
 DUBUS THREE (NON-JET) (RNAV)
CANBERRA, ACT (YSCB)

30 NOV 2023

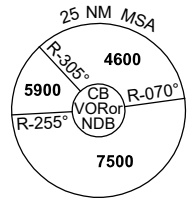
ATIS 116.7 127.45 263	AWIS (AH) 116.7	SMC/ACD 121.7	TWR 118.7	DEP 125.9	FIA (AH) ML CEN 125.9	CTAF+AFRU (AH) AFRU+PAL (AH) 118.7	BRG are MAG ELEV in FT AMSL
--------------------------	--------------------	------------------	--------------	--------------	--------------------------	--	--------------------------------

NOT TO SCALE



**SPEED
 MAX IAS 250KT
 BELOW 10,000ft**

RNP 1



10 NM MSA 5100

DUBUS THREE DEPARTURE

RWY 35

- GRAD 6.8% to 3400ft thence 3.3%
- NOT BEFORE DER turn RIGHT track 168°
- AT 3400ft turn LEFT, track 320°
- AT 5000ft turn LEFT, track DCT to NOGOR
- Turn LEFT, track 209° to DUBUS, thence as cleared

RWY 17

- GRAD 4.9% to 4800ft thence 3.3%
- Track 168°
- AT 3200ft turn RIGHT track DCT to POKOP
- **Cross** POKOP AT or ABV 5000ft
- Turn RIGHT, track 233° to SAGIR
- Turn LEFT, track 219° to DUBUS, thence as cleared