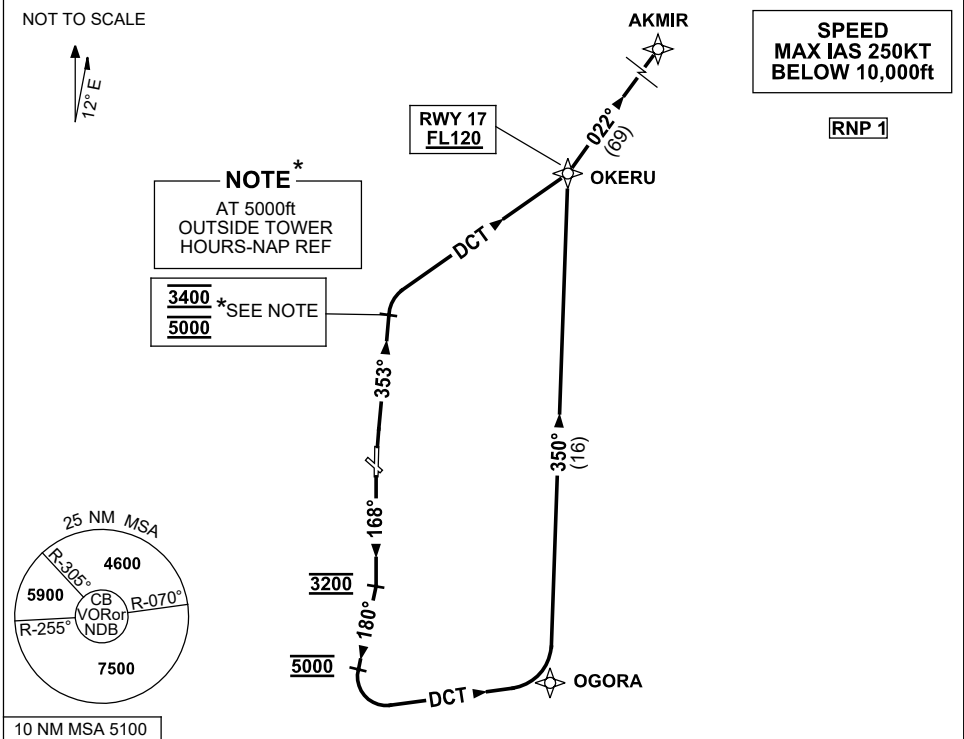


**STANDARD INSTRUMENT DEPARTURES (SID)  
AKMIR THREE (NON-JET) (RNAV)  
CANNBERRA, ACT (YSCB)**

**30 NOV 2023**

ATIS 116.7 127.45 263	AWIS (AH) 116.7	SMC/ACD 121.7	TWR 118.7	DEP 124.5	FIA (AH) ML CEN 125.9	CTAF+AFRU (AH) AFRU+PAL (AH) 118.7	BRG are MAG ELEV in FT AMSL
--------------------------	--------------------	------------------	--------------	--------------	--------------------------	--	--------------------------------



**AKMIR THREE DEPARTURE**

**RWY 35**

- GRAD 6.8% to 3400ft thence 3.3%
- NOT BEFORE DER turn RIGHT, track 353°
- AT 3400ft (5000ft - See NOTE \*) turn RIGHT, track DCT to OKERU
- Turn LEFT, track 022° to AKMIR, thence as cleared

**RWY 17**

- GRAD 4.9% to 4800ft thence 3.3%
- Track 168°
- AT 3200ft turn RIGHT, track 180°
- AT 5000ft turn LEFT, track DCT to OGORA
- Turn LEFT, track 350° to OKERU  
**Cross OKERU AT or ABV FL120**
- Turn RIGHT, track 022° to AKMIR, thence as cleared

Changes: RWY 35 GRAD, RNP SPEC, Editorial.

SCBDP07-177