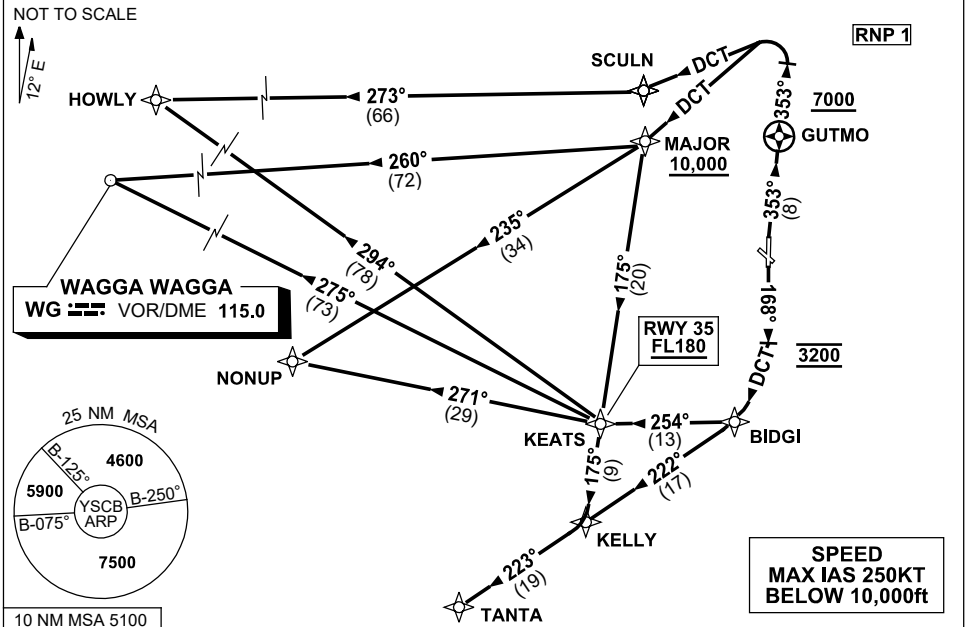


**STANDARD INSTRUMENT DEPARTURES (SID)
RWY 17/35 SOUTH & WEST (JET) (RNAV)
CANBERRA, ACT (YSCB)**

30 NOV 2023

ATIS 116.7 127.45 263	AWIS (AH) 116.7	SMC/ACD 121.7	TWR 118.7	DEP 125.9	FIA (AH) ML CEN 125.9	CTAF+AFRU (AH) AFRU+PAL (AH) 118.7	BRG are MAG ELEV in FT AMSL
--------------------------	--------------------	------------------	--------------	--------------	--------------------------	--	--------------------------------



HOWLY	NINE	DEPARTURE (RNAV)
WAGGA (WG)	TWO	DEPARTURE (RNAV)
NONUP	NINE	DEPARTURE (RNAV)
TANTA	THREE	DEPARTURE (RNAV)

RWY 35

- GRAD 6.8% to 3400ft thence 3.3%
- NOT BEFORE DER turn RIGHT
- Track 353° to GUTMO, thence 353°
- After passing GUTMO AND 7000ft, turn LEFT

For HOWLY

- Track DCT to SCULN
- Track 273° to HOWLY, thence as cleared

For WG VOR

- Track DCT to MAJOR
- **Cross MAJOR AT or ABV 10,000ft**
- Track 260° to WG VOR, thence as cleared

For NONUP

- Track DCT to MAJOR
- **Cross MAJOR AT or ABV 10,000ft**
- Track 235° to NONUP, thence as cleared

For TANTA

- Track DCT to MAJOR
- **Cross MAJOR AT or ABV 10,000ft**
- Turn LEFT, track 175° to KEATS
- **Cross KEATS AT or ABV FL180**
- Track 175° to KELLY
- Turn RIGHT, track 223° to TANTA, thence as cleared

RWY 17

- GRAD 4.9% to 4800ft thence 3.3%
- Track 168°
- AT 3200ft turn RIGHT, track DCT to BIDGI (approx 180°)

For HOWLY

- At BIDGI turn RIGHT, track 254° to KEATS
- At KEATS turn RIGHT, track 294° to HOWLY, thence as cleared

For WG VOR

- At BIDGI turn RIGHT, track 254° to KEATS
- At KEATS turn RIGHT, track 275° to WG VOR, thence as cleared

For NONUP

- At BIDGI turn RIGHT, track 254° to KEATS
- At KEATS turn RIGHT, track 271° to NONUP, thence as cleared

For TANTA

- Turn RIGHT, track 222° to KELLY,
- Track 223° to TANTA, thence as cleared

Changes: RWY 35 GRAD, MAG TRACK, Editorial.

SCBDP06-177