

**STANDARD INSTRUMENT DEPARTURES (SID)
CANBERRA THREE DEPARTURE (RADAR) - RWY 12, 17 & 35
CANBERRA, ACT (YSCB)**

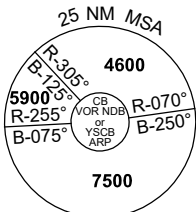
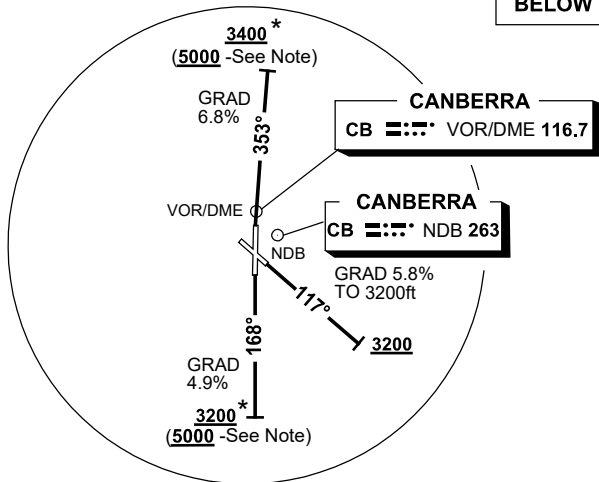
30 NOV 2023

| | | | | | | | |
|--------------------------|--------------------|------------------|--------------|---|--------------------------|--|--------------------------------|
| ATIS 116.7 127.45 263 | AWIS (AH) 116.7 | SMC/ACD 121.7 | TWR 118.7 | DEP TRACKS EAST 124.5 TRACKS WEST 125.9 | FIA (AH) ML CEN 125.9 | CTAF+AFRU (AH) AFRU+PAL (AH) 118.7 | BRG are MAG ELEV in FT AMSL |
|--------------------------|--------------------|------------------|--------------|---|--------------------------|--|--------------------------------|

NOT TO SCALE



**SPEED
MAX IAS 250KT
BELOW 10,000ft**



10 NM MSA 5100

GNSS permitted in lieu of DME
Reference waypoint CB VOR

NOTE *
NOT BELOW 5000ft
OUTSIDE TOWER
HOURS-NAP REF

CANBERRA THREE DEPARTURE (RADAR)

RWY 12

- GRAD 5.8% to 3200ft thence 3.3%
- Track 117°
- AT 3200ft turn to assigned heading or track

RWY 17

- GRAD 4.9% to 4800ft thence 3.3%
- Track 168°
- AT 3200ft (5000ft-See NOTE *) turn to assigned heading or track

RWY 35

- GRAD 6.8% to 3400ft thence 3.3%
- NOT BEFORE DER turn RIGHT, track 353°
- AT 3400ft (5000ft-See NOTE *) turn to assigned heading

COMMUNICATIONS FAILURE PROCEDURE

On recognition of communication failure

- Squawk 7600.
- Maintain last assigned vector for two minutes and, if necessary, climb to minimum safe altitude to maintain terrain clearance, then
- Proceed in accordance with the latest ATC route clearance acknowledged.

Changes: RWY 35 GRAD, NEW LOGO.

SCBDP01-177