

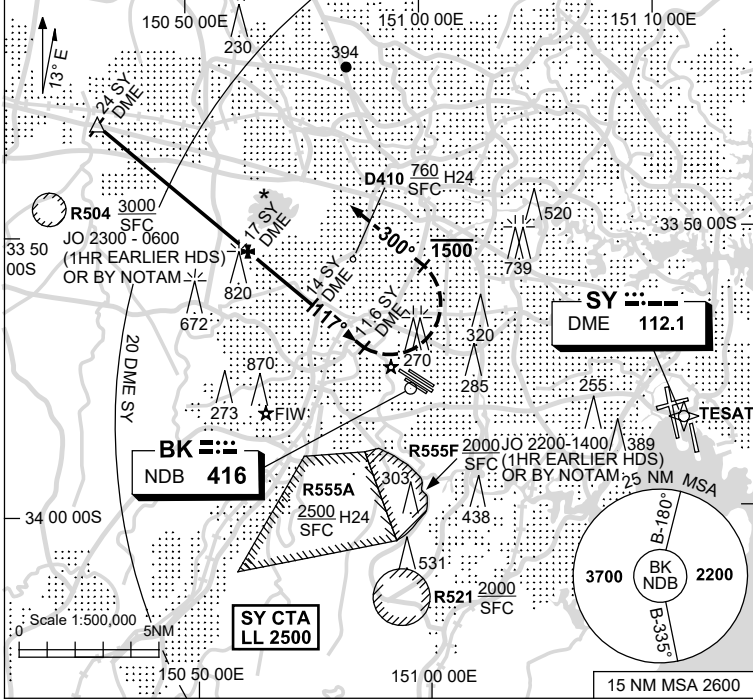
USE QNH

NDB RWY 11C

13 JUN 2024

SYDNEY/BANKSTOWN, NSW (YSBK)

ATIS 120.9	DEP SY 118.4	TWR 123.6 132.8	SMC 119.9	FIA (AH) SY CEN 125.8	CTAF+AFRU (AH) 132.8	PAL+AA 125.95	NAVAID RQ: • SY DME
---------------	-----------------	--------------------	--------------	--------------------------	-------------------------	------------------	------------------------

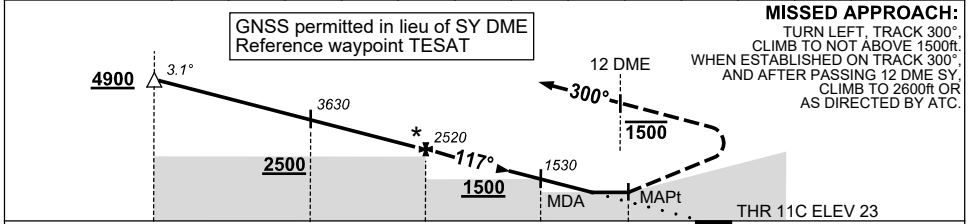


Holding as Advised by ATC

TR	IN	TURN	TIME	MIN ALT	DME LMT
/	/	/	/	/	/

AD ELEV 34
Bearings are Magnetic
Elevations in FEET AMSL

DIST TO SY DME	23.8	23	22	21	20	19	18	17	16	15	14	13	12	11.7
ALT(3.1° APCH PATH)	4900	4650	4310	3970	3630	3280	2930	2520	2240	1880	1530	1170	800	700



MISSED APPROACH:
TURN LEFT, TRACK 300°. CLIMB TO NOT ABOVE 1500ft. WHEN ESTABLISHED ON TRACK 300°, AND AFTER PASSING 12 DME SY, CLIMB TO 2600ft OR AS DIRECTED BY ATC.

NM TO SY DME	24	20	17	14	11.6	10
NM TO THR 11C	14.9	10.8	7.6	4.4	1.8	0

NOTES

- MAX IAS:
INITIAL : 180KT.
MISSED APCH : 160KT.
- CIRCLING BEYOND 2.5NM SW OF YSBK WILL REQUIRE A CLEARANCE INTO R555A.
- ACFT WILL BE RADAR VECTORED TO IAF.
- *4. ACFT ARE TO BE AT 2500FT BY 17 SY.

CATEGORY	A	B	C	D
S-I NDB	700 (677-3.7)			NOT APPLICABLE
CIRCLING	800 (766-2.4)		960 (926-4.0)	
ALTERNATE	(1266-4.4)		(1426-6.0)	

Changes: 15NM MSA, MAG VAR, MINIMA, ATIS, Editorial.

SBKNB03-179