

**STANDARD INSTRUMENT DEPARTURES (SID)
BANKSTOWN NINE DEPARTURE RWY 11C/29C
SYDNEY/BANKSTOWN, NSW (YSBK)**

13 JUN 2024

ATIS 120.9	SMC 119.9	TWR 123.6 132.8	DEP AS ADVISED	FIA (AH) SY CEN 125.8	CTAF+AFRU (AH) 132.8	PAL+AA 125.95	Bearings are MAG ELEV in FT AMSL
---------------	--------------	--------------------	-------------------	--------------------------	-------------------------	------------------	-------------------------------------

NOT TO SCALE

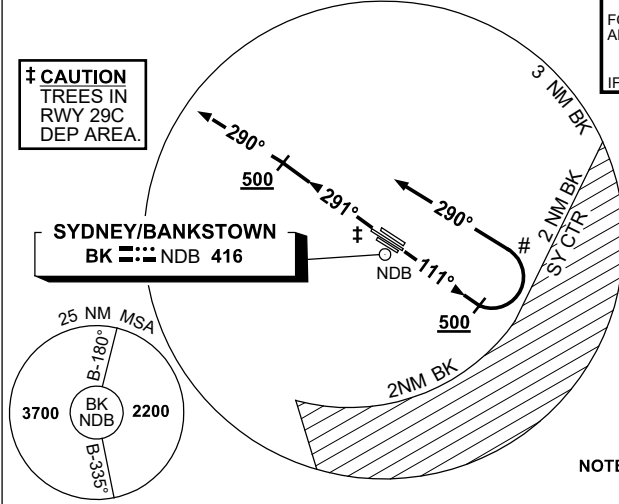


WARNING: Unless specifically in receipt of a clearance to enter SY CTR, it is the responsibility of the PIC to remain clear of SY CTR.

CAUTION: DO NOT pass thru 1500ft until established on 290°

SPECIAL REQUIREMENT
 FOR ACFT CLEARED VIA OLSEM-Y193-BANDA
 - REACH FL180 by 156NM BANDA
 - REACH FL220 by 144NM BANDA
 - REACH FL250 by 110NM BANDA
 FOR ACFT CLEARED VIA WLM AT or ABV FL130
 - REACH FL130 by 31NM WLM NDB
 FOR ACFT CLEARED VIA PUDUT-MATLA AT or ABV FL130
 - REACH FL130 by 15NM PUDUT
 - REACH FL160 by PUDUT
 IF UNABLE TO COMPLY ADVISE ATC.

‡ **CAUTION**
TREES IN
RWY 29C
DEP AREA.



CLASS D SPEED LIMITS APPLY

**SPEED
MAX IAS 250KT
BELOW 10,000ft**

**SYDNEY/KINGSFORD SMITH
SY :--: DME 112.1**

NOTE: EXPECT TO MAINTAIN 3000ft UNTIL 15 DME SY

15 NM MSA 2600

GRAD 3.3%

BANKSTOWN NINE DEPARTURE

PROC NOT AVBL FROM RWYS 11L/29R AND 11R/29L

WARNING: Unless specifically in receipt of a clearance to enter SY CTR, it is the responsibility of the PIC to remain clear of SY CTR.

RWY 11C

- Track 111°
- AT or ABV 500ft, turn LEFT track 290°
- Contact Departures when advised by Tower, or approaching controlled airspace

RWY 29C

- Track 291°
- AT or ABV 500ft, turn LEFT track 290°
- Contact Departures when advised by Tower, or approaching controlled airspace

CAUTION: DO NOT pass thru 1500ft until established on 290°

COMMUNICATIONS FAILURE PROCEDURE

On recognition of communications failure

- Squawk 7600
- Maintain last procedure track for two minutes, and
- CLIMB IF NECESSARY TO MINIMUM SAFE ALTITUDE, to maintain terrain clearance, then
- proceed in accordance with the latest ATC route clearance acknowledged.

Changes: 15NM MSA, MAR VAR, ATIS, Editorial.

SBKDP01-179