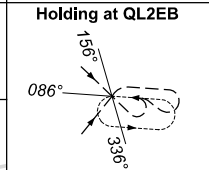
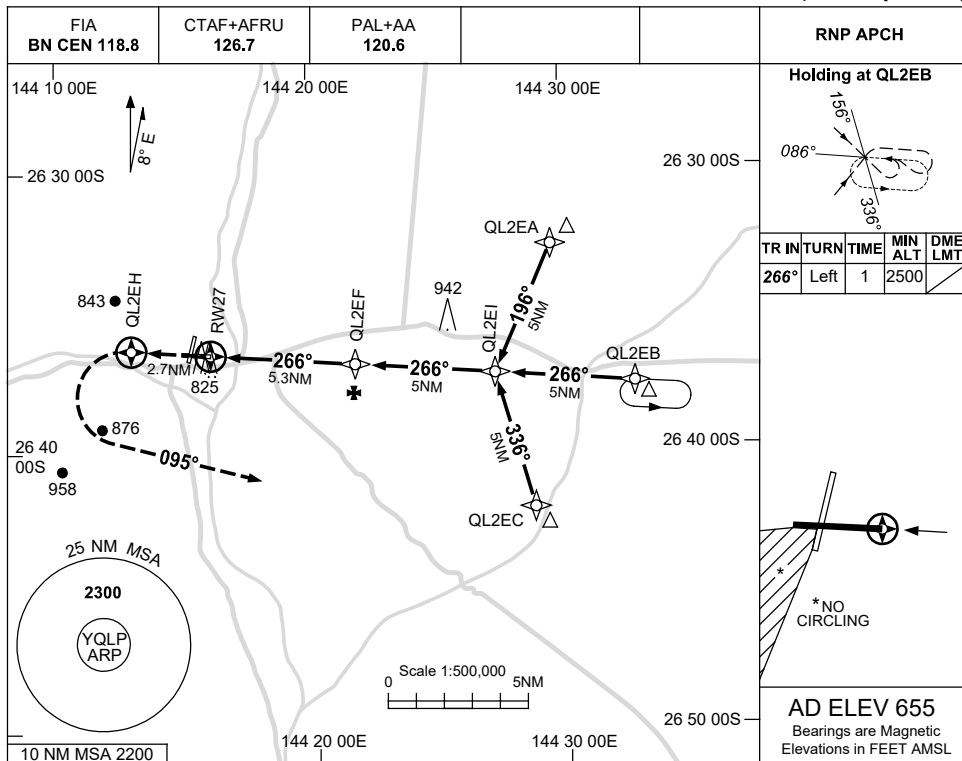


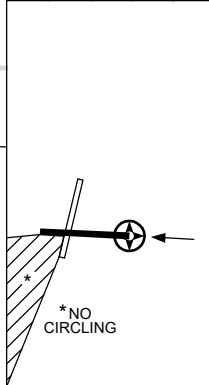
USE QNH

RNP RWY 27
QUILPIE, QLD (YQLP)

1 DEC 2022

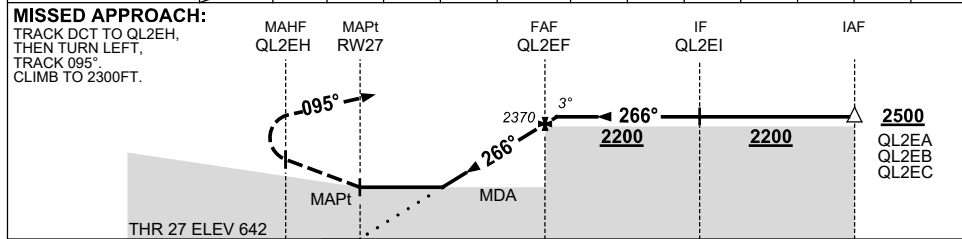


TR	IN	TURN	TIME	MIN ALT	DME LMT
266°	Left	1		2500	



AD ELEV 655
 Bearings are Magnetic
 Elevations in FEET AMSL

NM TO NEXT WPT	RW27	1.6	2	3	4	QL2EF	0.4				
ALT (3° APCH PATH)		1210	1330	1650	1970	2370	2500				



NOTES

CATEGORY	A	B	C	D
LNAV	1210 (568-3.2)			NOT APPLICABLE
CIRCLING *	1250 (595-2.4)		1480 (825-4.0)	
ALTERNATE	(1095-4.4)		(1325-6.0)	

- 1. MAX IAS: INITIAL : 230KT.
- *2. NO CIRCLING SOUTH WEST OF RWY 18/36 & 09/27.

Changes: 942FT MAST, 825FT MAST, WPT NAMING CONVENTION.

QLPGN02-173