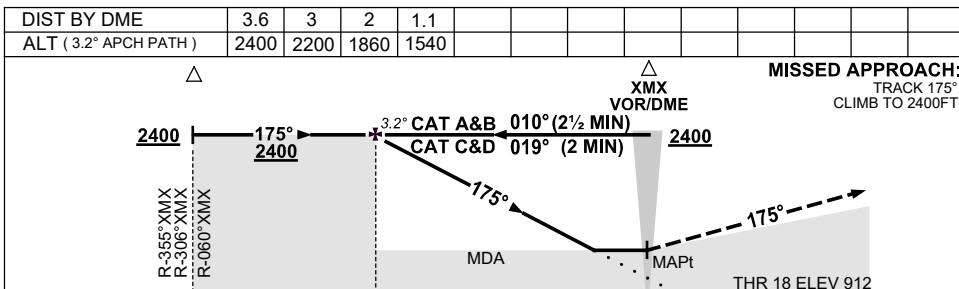
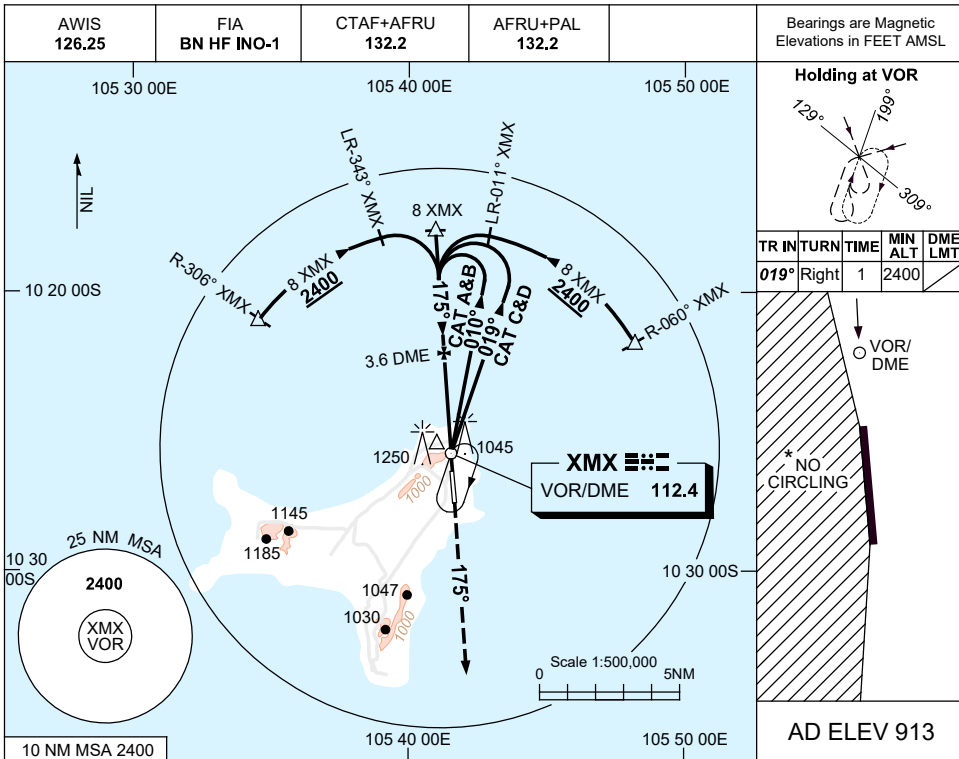


**USE QNH  
CHRISTMAS ISLAND, AUSTRALIA (YPXM)**

VOR RWY 18

16 JUN 2022



**NOTES**

1. MAX IAS:  
INITIAL : 210KT.
- \*2. NO CIRCLING WEST OF RWY 18/36.
3. COLOUR: SEE SPEC NOTICES.

CATEGORY	A	B	C	D
S-I VOR		<b>1540 (627-3.4)</b>		
S-I VOR/DME		<b>1540 (627-3.4)</b>		
CIRCLING*	<b>1650 (737-2.4)</b>		<b>1750 (837-4.0)</b>	<b>1750 (837-5.0)</b>
ALTERNATE	<b>(1237-4.4)</b>		<b>(1337-6.0)</b>	<b>(1337-7.0)</b>

Changes: AFRU+PAL

PXMV001-171