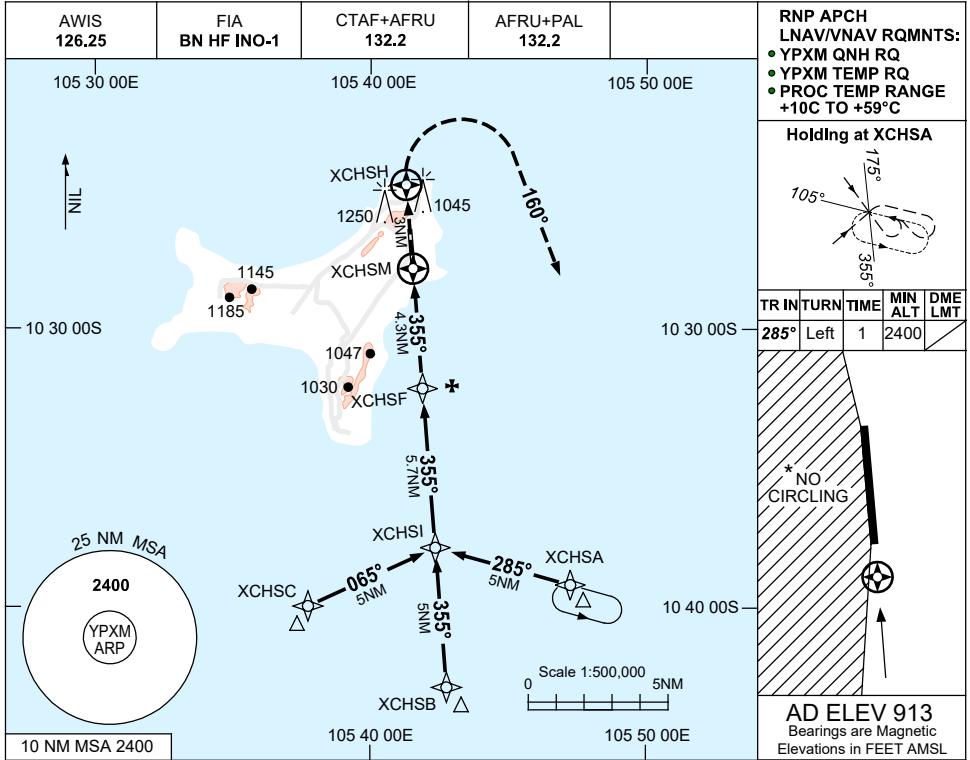


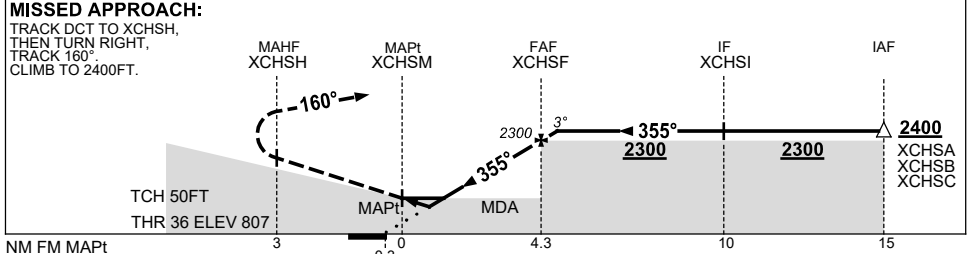
**USE QNH**  
**CHRISTMAS ISLAND, AUSTRALIA (YPXM)**

RNP RWY 36

7 SEP 2023



NM TO NEXT WPT	XCHSM	0.8	1.4	2	3	4	XCHSF	0.3				
ALT (3° APCH PATH)		1200	1400	1590	1900	2220	2300	2400				



**NOTES**

CATEGORY	A	B	C	D
LNAV/VNAV		<b>1200 (393-2.2)</b>		
LNAV		<b>1400 (593-3.4)</b>		
CIRCLING *	<b>1650 (737-2.4)</b>	<b>1750 (837-4.0)</b>	<b>1750 (837-5.0)</b>	
ALTERNATE	(1237-4.4)	(1337-6.0)	(1337-7.0)	

1. MAX IAS: INITIAL : 210KT.
2. NO CIRCLING WEST OF RWY 18/36.
3. COLOUR: SEE SPEC NOTICES.

Changes: CHART TITLE, PBN SPECIFICATION BOX, Editorial. PXMG02-176