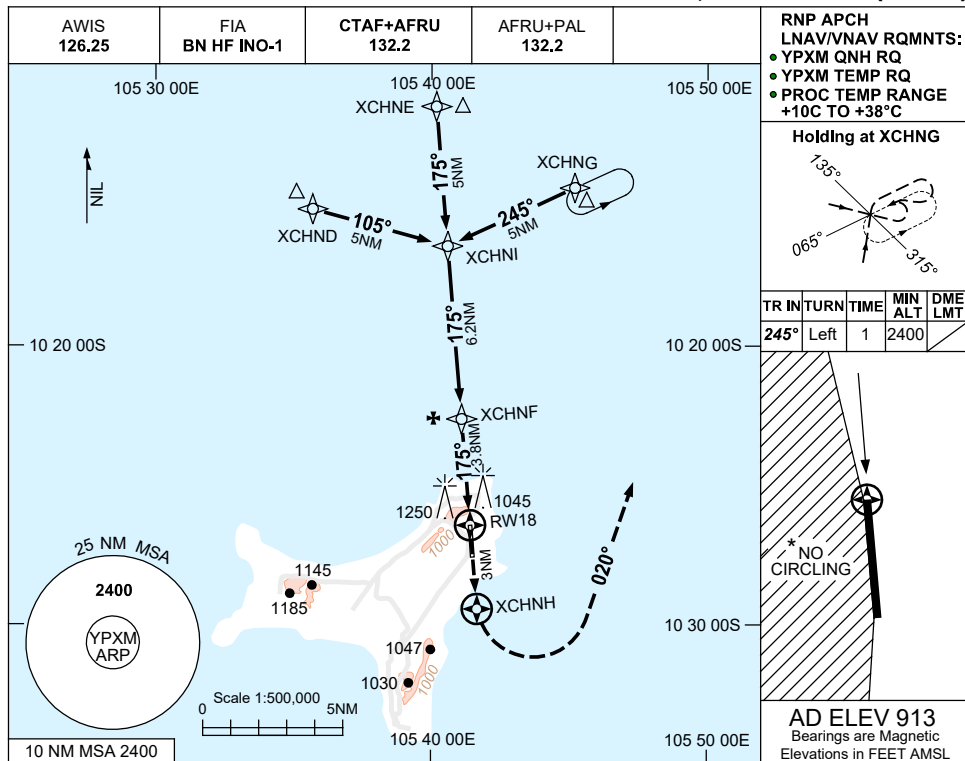
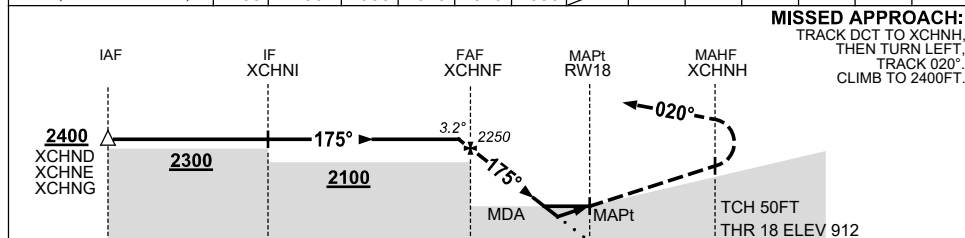


USE QNH CHRISTMAS ISLAND, AUSTRALIA (YPXM) RNP RWY 18

7 SEP 2023



NM TO NEXT WPT	0.4	XCHNF	3	2	1.6	1.1	RW18						
ALT (3.2° APCH PATH)	2400	2250	1980	1640	1520	1330							



MISSED APPROACH:
 TRACK DCT TO XCHNH,
 THEN TURN LEFT,
 TRACK 020°,
 CLIMB TO 2400FT.

CATEGORY	A	B	C	D
LNAV/VNAV		1330 (418-2.2)		
LNAV		1520 (607-3.2)		
CIRCLING*	1650 (737-2.4)	1750 (837-4.0)	1750 (837-5.0)	
ALTERNATE	(1237-4.4)	(1337-6.0)	(1337-7.0)	

- NOTES**
- MAX IAS: INITIAL : 210KT.
 - NO CIRCLING WEST OF RWY 18/36.
 - COLOUR: SEE SPEC NOTICES.

Changes: CHART TITLE, PBN SPECIFICATION BOX, Editorial.

PXMGN01-176