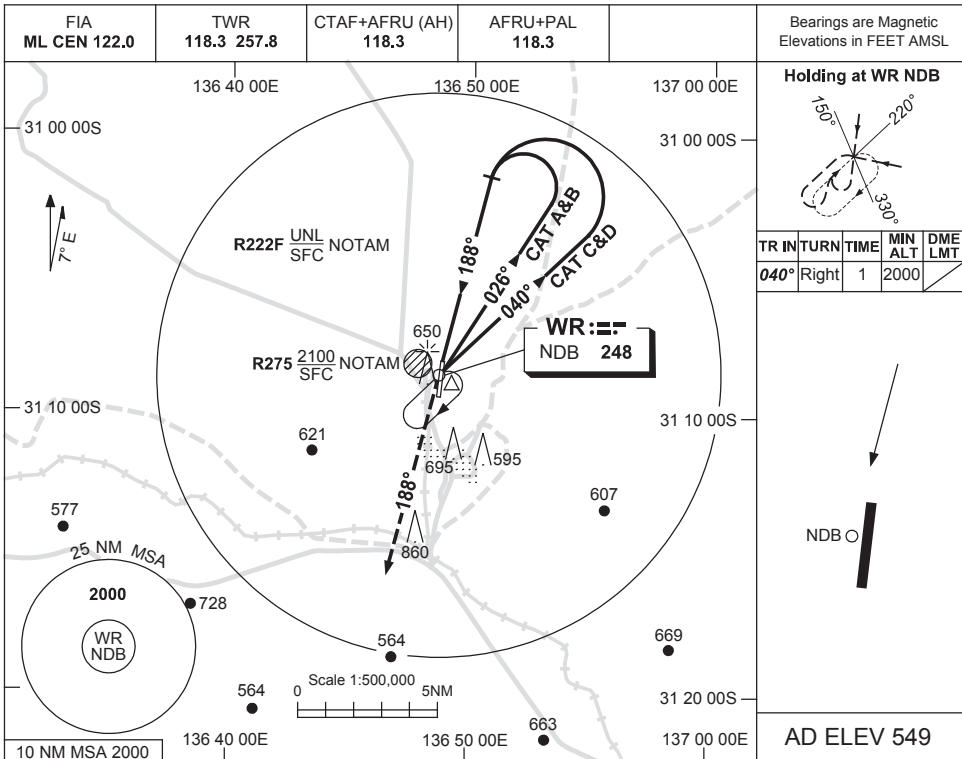


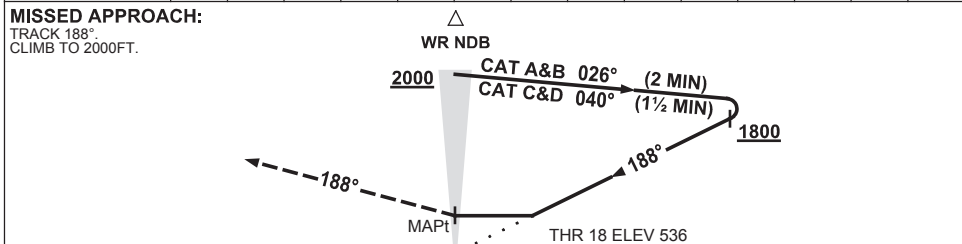
USE QNH

NDB RWY 18
WOOMERA, SA (YPWR)

25 MAR 2021



DME DIST	NOT APPLICABLE				
ALT					



NOTES

CATEGORY	A	B	C	D
S-I NDB	1150 (614-3.5)			
CIRCLING	1190 (641-2.4)	1290 (741-4.0)	1340 (791-5.0)	
ALTERNATE	(1141-4.4)	(1241-6.0)	(1291-7.0)	

1. MAX IAS:
INITIAL : 210KT.
2. AWIS (PHONE)
08 8150 3820
3. PROC NOT AVBL
WHEN R275 ACTIVE

Changes: S-I NDB MDH, REPLACED 673FT WITH 695FT OBST, Editorial.

PWRNB01-166