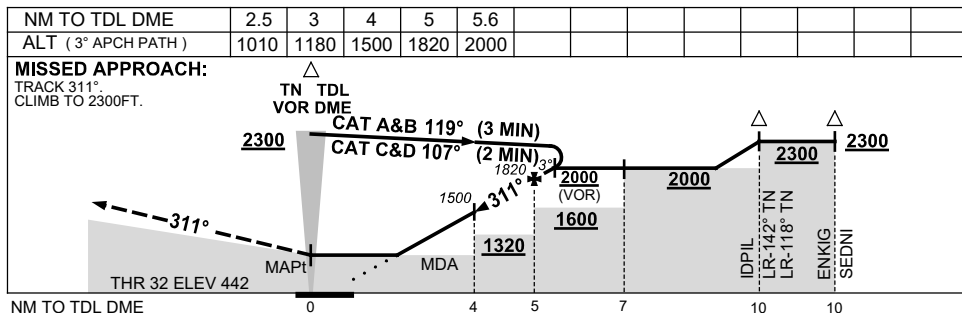
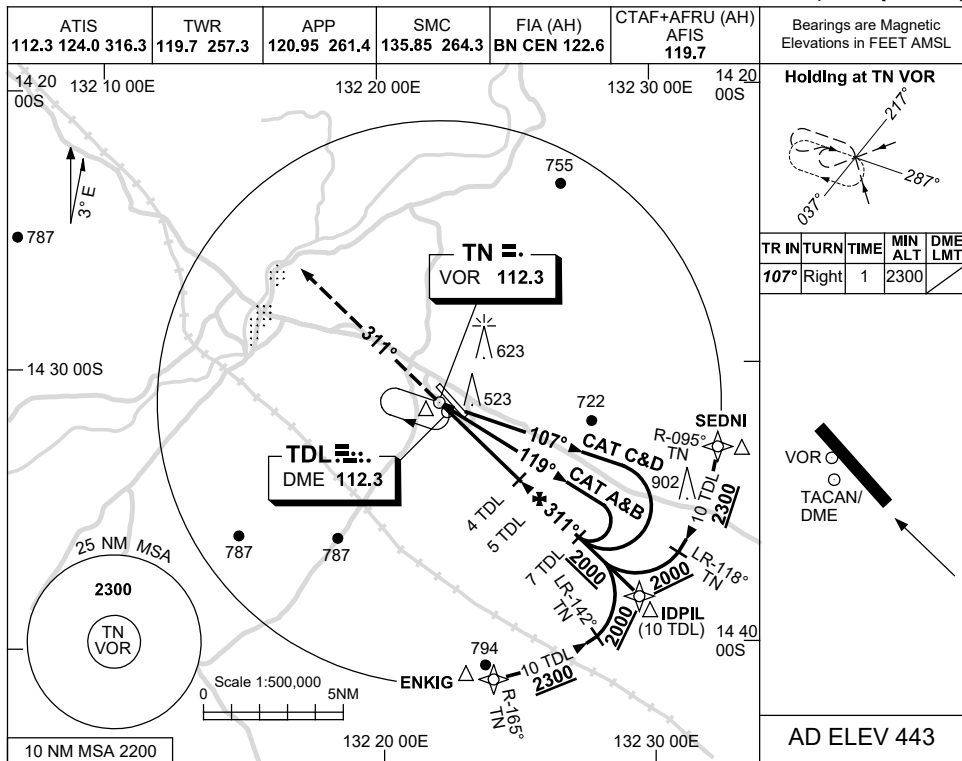


USE QNH

VOR RWY 32  
TINDAL, NT (YPTN)

30 NOV 2023



**NOTES**

1. MAX IAS:  
INITIAL : 210KT.

CATEGORY	A	B	C	D
S-I VOR/DME	1010 (567-3.2)			
S-I VOR	1250 (807-4.6)			
CIRCLING	1260 (817-2.4)	1290 (847-4.0)		1350 (907-5.0)
ALTERNATE	(1317-4.4)		(1347-6.0) (1407-7.0)	

Changes: AFIS, Editorial.

PTNVO02-177