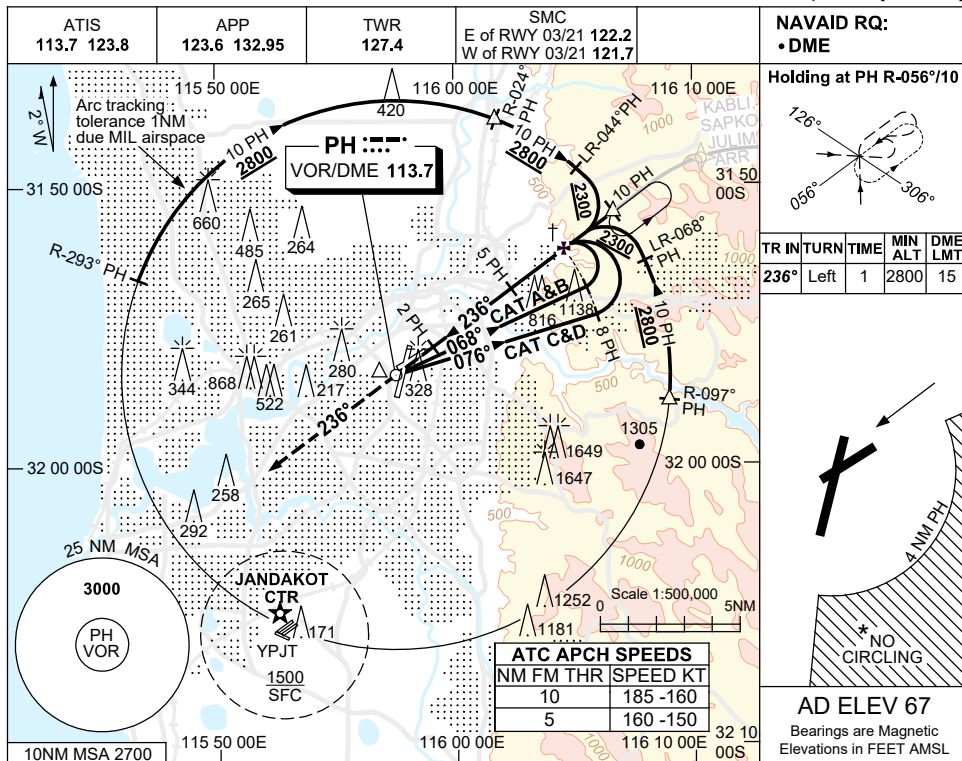


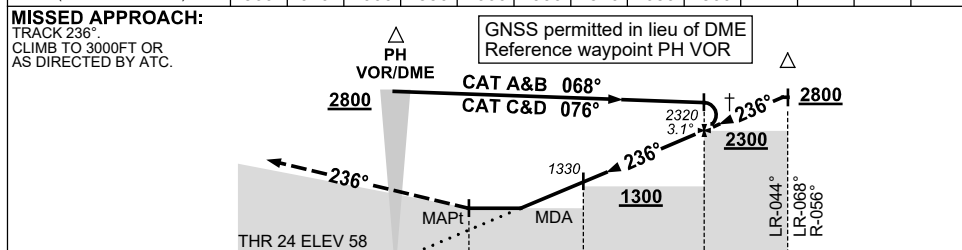
USE QNH

VOR RWY 24
PERTH, WA (YPPH)

13 JUN 2024



NM TO PH DME	2.7	3	4	5	6	7	8	9	9.5				
ALT(3.1°APCH PATH)	560	670	1000	1330	1660	1990	2320	2650	2800				



NM TO PH DME

CATEGORY	A	B	C	D
S-I VOR/DME	560 (502-1.9)			
CIRCLING *	760 (693-2.4)	1440 (1373-4.0)	1440 (1373-5.0)	
ALTERNATE *	(1193-4.4)	(1873-6.0)	(1873-7.0)	

NOTES

- * 1. NO CIRCLING CAT C&D ACFT BEYOND 4NM PH E OF RWY 03/21 AND 06/24.
- † 2. ACFT MAY BE RADAR VECTORED TO FNA.
- * 3. SPECIAL ALTN MNM NOT APPLICABLE.
4. COLOUR: SEE SPEC NOTICES.

Changes: KABL REPLACES BEVLY.

PPHVO04-179