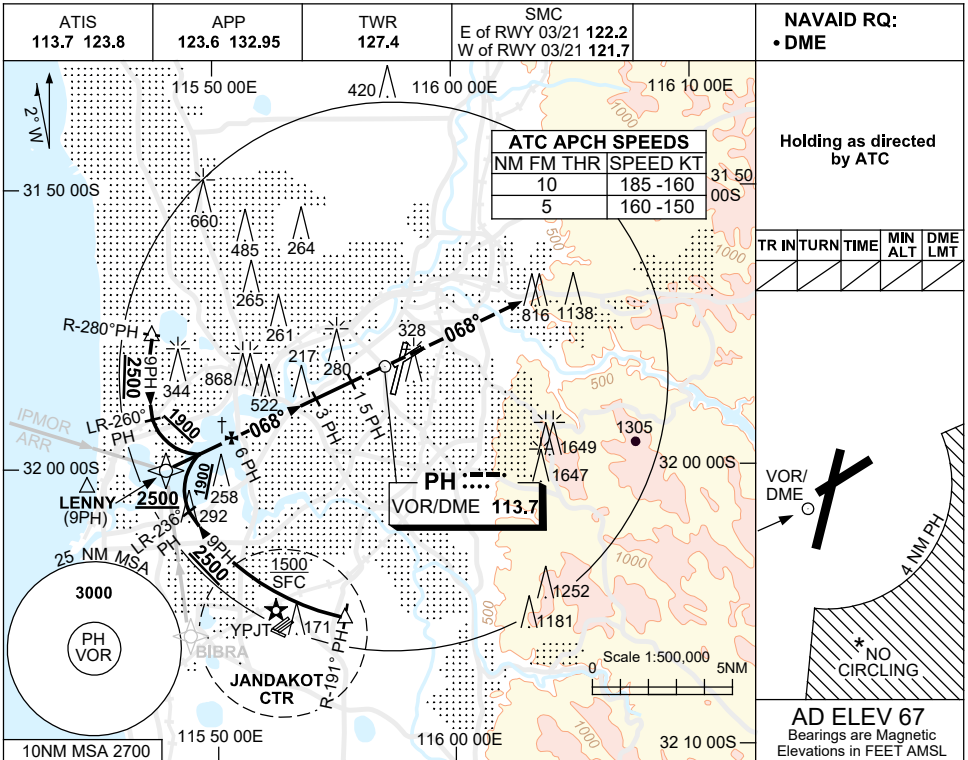


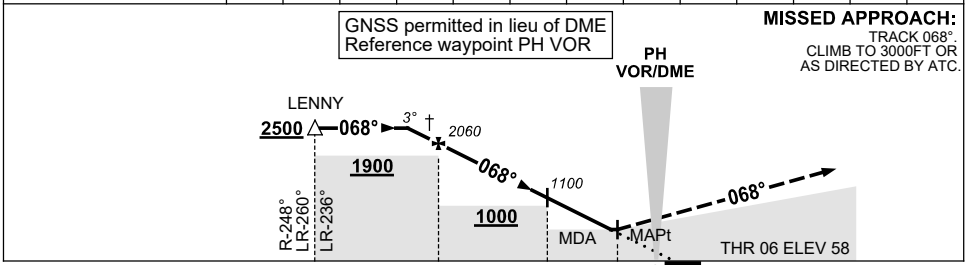
USE QNH

VOR RWY 06  
PERTH, WA (YPPH)

30 NOV 2023



NM TO PH DME	7.4	7	6	5	4	3	2	1.5					
ALT (3° APCH PATH)	2500	2370	2060	1740	1420	1100	780	620					



NOTES

- \* 1. NO CIRCLING CAT C&D ACFT BEYOND 4NM PH E OF RWY 03/21 AND 06/24.
- † 2. ACFT MAY BE RADAR VECTORED TO FNA.
- \* 3. SPECIAL ALTN MNM NOT APPLICABLE.
- 4. COLOUR: SEE SPEC NOTICES.

CATEGORY	A	B	C	D
S-I VOR/DME	<b>620 (562-3.2)</b>			
CIRCLING *	<b>760 (693-2.4)</b>		<b>1440 (1373-4.0) 1440 (1373-5.0)</b>	
ALTERNATE †	(1193-4.4)		(1873-6.0) (1873-7.0)	

Changes: IPMOR REPLACES WAVES, Editorial.

PPHVO02-177