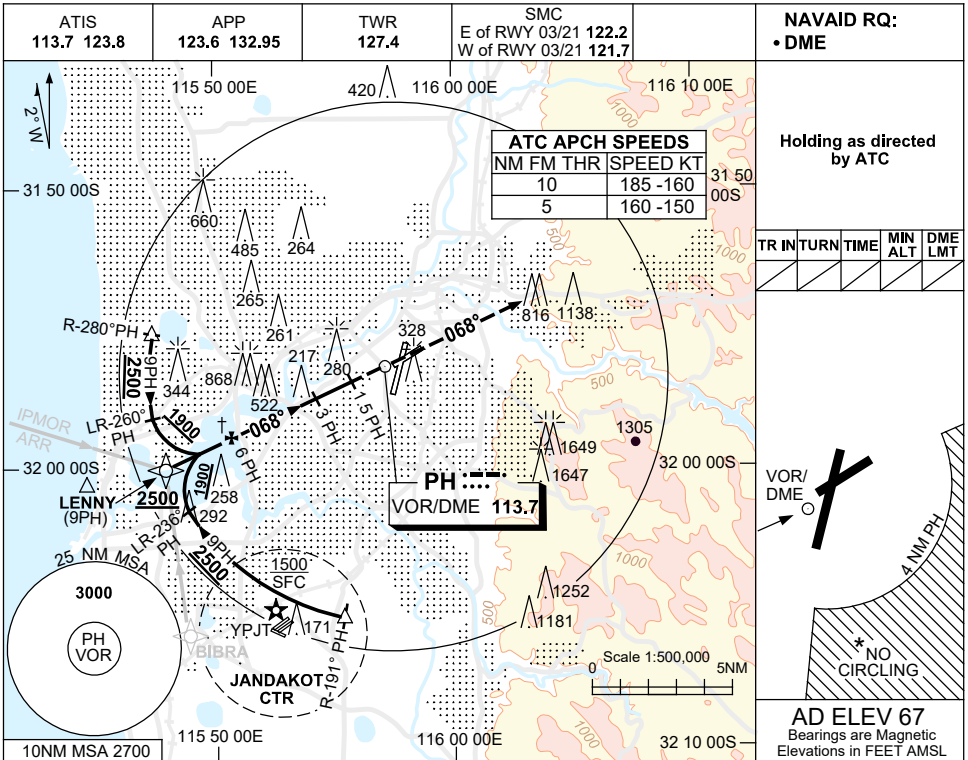


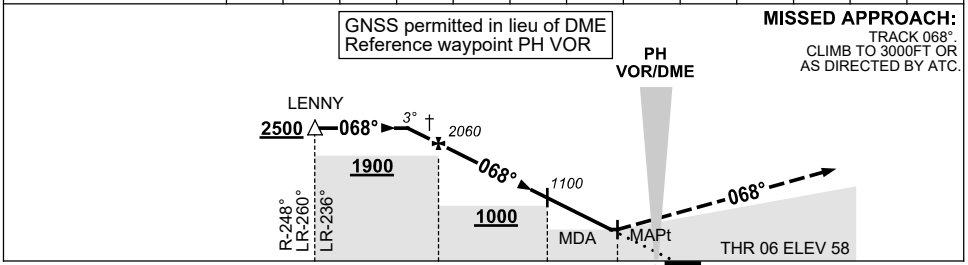
USE QNH

VOR RWY 06
PERTH, WA (YPPH)

30 NOV 2023



NM TO PH DME	7.4	7	6	5	4	3	2	1.5				
ALT (3° APCH PATH)	2500	2370	2060	1740	1420	1100	780	620				



NM TO PH DME	9	6	3	1.5	0
--------------	---	---	---	-----	---

NOTES

- * 1. NO CIRCLING CAT C&D
ACFT BEYOND 4NM
PH E OF RWY 03/21
AND 06/24.
- † 2. ACFT MAY BE RADAR
VECTORED TO FNA.
- * 3. SPECIAL ALTN MNM
NOT APPLICABLE.
- 4. **COLOUR:** SEE
SPEC NOTICES.

CATEGORY	A	B	C	D
S-I VOR/DME	620 (562-3.2)			
CIRCLING *	760 (693-2.4)		1440 (1373-4.0) 1440 (1373-5.0)	
ALTERNATE †	(1193-4.4)		(1873-6.0) (1873-7.0)	

Changes: IPMOR REPLACES WAVES, Editorial. PPHVO02-177