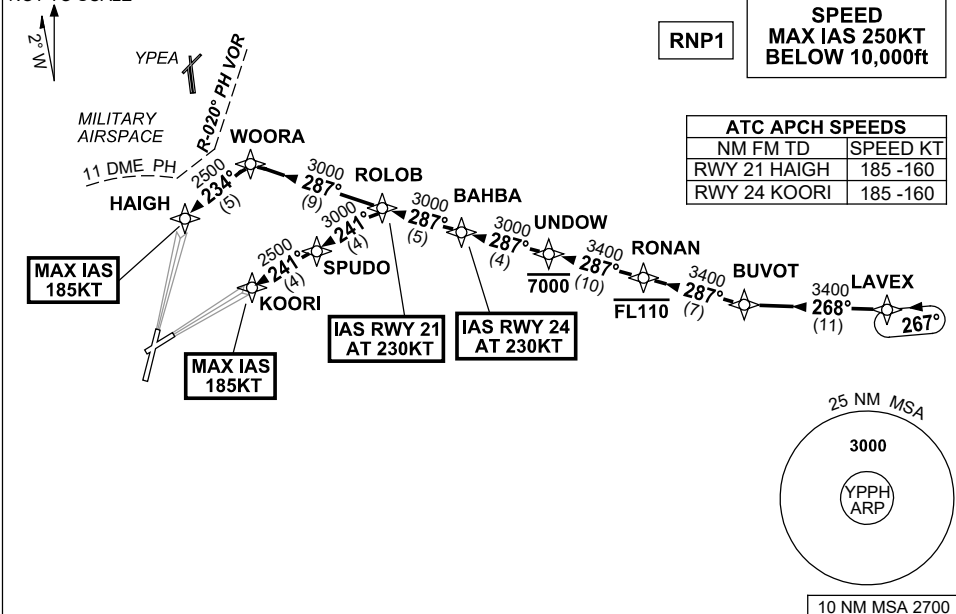


**STANDARD INSTRUMENT ARRIVAL (STAR)
LAVEX ONE ALPHA ARRIVALS (NON-JET) (RNAV) RWY 21/24
PERTH, WA (YPPH)**

13 JUN 2024

ATIS 113.7 123.8	APP 123.6	TWR 127.4	SMC E of RWY 03/21 122.2 W of RWY 03/21 121.7	Bearings are Magnetic Elevations in FEET AMSL
---------------------	--------------	--------------	---	--

NOT TO SCALE



ARRIVAL: LAVEX ONE

RWY 21 ALPHA:

- From LAVEX, track 268° to BUVOT,
- Turn RIGHT, track 287° to RONAN,
Cross RONAN AT or BLW FL110,
- Track 287° to UNDOWN,
Cross UNDOWN AT or BLW 7000ft,
- Track 287° to BAHBA,
- Track 287° to ROLOB,
IAS AT 230KT from ROLOB,
- Track 287° to WOORA,
- Turn LEFT, track 234° to HAIGH,
for ILS, RNP or
LOC RWY 21 APPROACH,
MAX IAS 185KT from HAIGH.

RWY 24 ALPHA:

- From LAVEX, track 268° to BUVOT,
- Turn RIGHT, track 287° to RONAN,
Cross RONAN AT or BLW FL110,
- Track 287° to UNDOWN,
Cross UNDOWN AT or BLW 7000ft,
- Track 287° to BAHBA,
IAS AT 230KT from BAHBA,
- Track 287° to ROLOB,
- Turn LEFT, track 241° to SPUDO,
- Track 241° to KOORI,
for ILS, RNP or
LOC RWY 24 APPROACH,
MAX IAS 185KT from KOORI.

COMMUNICATIONS FAILURE: PROCEDURE IN IMC

- Squawk 7600, comply with vertical navigation requirements, but not below MSA.
- Track via the latest STAR clearance to the nominated runway, then fly the most suitable approach in accordance with ERSA EMERG Section 1.5.

Changes: LAVEX REPLACES GRENE, BUVOT REPLACES DORIS, VALIDITY INDICATOR.

PPHSR26-179