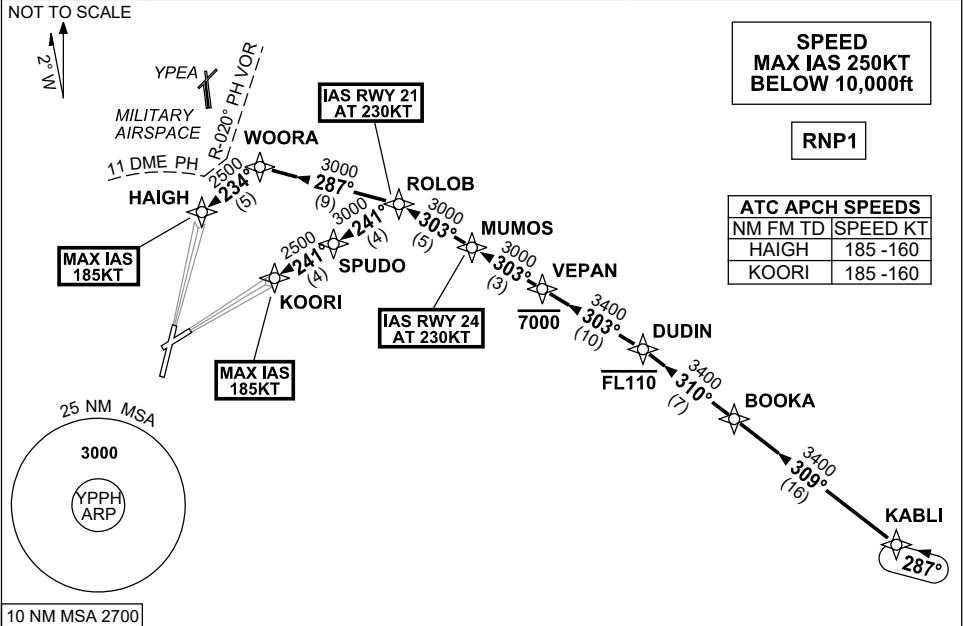


**STANDARD INSTRUMENT ARRIVAL (STAR)
KABLI ONE ALPHA ARRIVALS (JET) (RNAV) RWY 21/24
PERTH, WA (YPPH)**

13 JUN 2024

ATIS 113.7 123.8	APP 123.6	TWR 127.4	SMC E of RWY 03/21 122.2 W of RWY 03/21 121.7	Bearings are Magnetic Elevations in FEET AMSL
---------------------	--------------	--------------	---	--



ARRIVAL: KABLI ONE

RWY 21 ALPHA:

- From KABL1, track 309° to BOOKA
- Track 310° to DUDIN
Cross DUDIN AT or BLW FL110
- Turn LEFT, track 303° to VEPAN
Cross VEPAN AT or BLW 7000ft
- Track 303° to MUMOS
- Track 303° to ROLOB
IAS AT 230KT from ROLOB
- Turn LEFT, track 287° to WOORA
- Turn LEFT, track 234° to HAIGH for ILS, RNP or LOC RWY 21 APPROACH
MAX IAS 185KT from HAIGH

RWY 24 ALPHA:

- From KABL1, track 309° to BOOKA
- Track 310° to DUDIN
Cross DUDIN AT or BLW FL110
- Turn LEFT, track 303° to VEPAN
Cross VEPAN AT or BLW 7000ft
- Track 303° to MUMOS
IAS AT 230KT from MUMOS
- Track 303° to ROLOB
- Turn LEFT, track 241° to SPUDO for ILS, RNP or LOC RWY 24 APPROACH
MAX IAS 185KT from KOORI

COMMUNICATIONS FAILURE: PROCEDURE IN IMC

- Squawk 7600, comply with vertical navigation requirements, but not below MSA.
- Track via the latest STAR clearance to the nominated runway, then fly the most suitable approach in accordance with ERSA EMERG Section 1.5.

Changes: KABL1, DUDIN, VEPAN REPLACES BEVLY, PONYS, DELAK, VALIDITY INDICATOR. PPHSR23-179