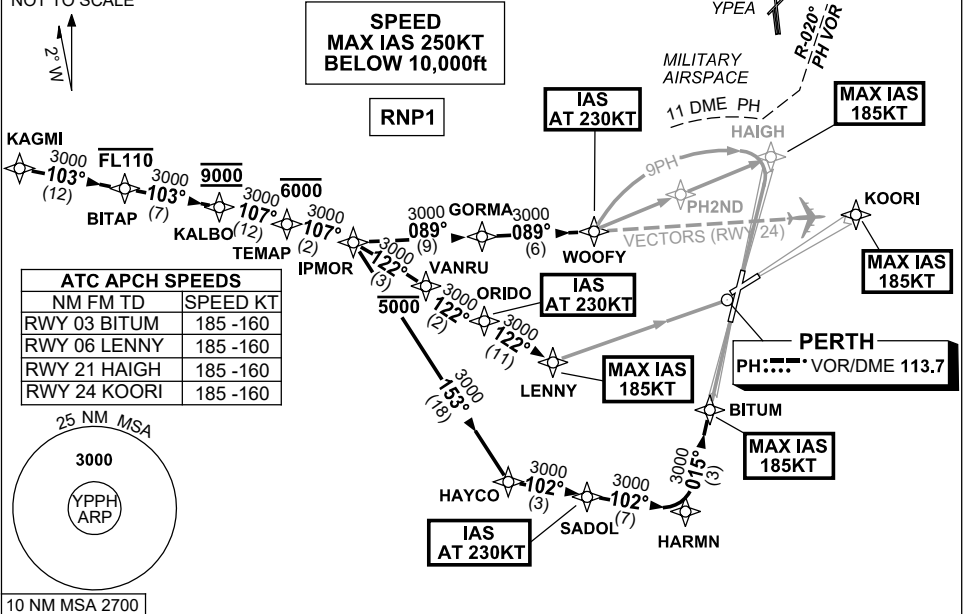


**STANDARD INSTRUMENT ARRIVAL (STAR)
IPMOR TWO ALPHA ARRIVALS (RNAV)
PERTH, WA (YPPH)**

13 JUN 2024

ATIS 113.7 123.8	APP 123.6	TWR 127.4	SMC E of RWY 03/21 122.2 W of RWY 03/21 121.7	Bearings are Magnetic Elevations in FEET AMSL
---------------------	--------------	--------------	---	--

NOT TO SCALE



KAGMI TRANSITION

- From KAGMI, track 103° to BITAP
Cross BITAP AT or BLW FL110
- Track 103° to KALBO
Cross KALBO AT 9000ft
- Turn RIGHT, track 107° to TEMAP
Cross TEMAP AT or BLW 6000ft
- Track 107° to IPMOR
- Then follow ARRIVAL Instructions.

ARRIVAL: IPMOR TWO

RWY 03 ALPHA:

- Turn RIGHT, track 153° to HAYCO
- Turn LEFT, track 102° to SADOL
IAS AT 230KT from SADOL
- Track 102° to HARMN
- Turn LEFT, track 015° to BITUM
for ILS, RNP Z or LOC
RWY 03 APPROACH
MAX IAS 185KT from BITUM

RWY 06 ALPHA:

- Turn RIGHT, track 122° to VANRU
Cross VANRU AT or BLW 5000ft
- Track 122° to ORIDO
IAS AT 230KT from ORIDO
- Track 122° to LENNY
for RNP or
VOR RWY 06 APPROACH
MAX IAS 185KT from LENNY.

RWY 21 ALPHA:

- Turn LEFT, track 089° to GORMA
- Track 089° to WOOFY
for ILS, RNP, LOC or
VOR RWY 21 APPROACH
IAS AT 230KT from WOOFY
MAX IAS 185KT from HAIGH

RWY 24 ALPHA:

- Turn LEFT, track 089° to GORMA
- Track 089° to WOOFY,
IAS AT 230KT from WOOFY
- Expect radar vectors for ILS,
RNP or LOC RWY 24 APPROACH
MAX IAS 185KT from KOORI

COMMUNICATIONS FAILURE: PROCEDURE IN IMC

- Squawk 7600, comply with vertical navigation requirements, but not below MSA.
- Track via the latest STAR clearance to the nominated runway, then fly the most suitable approach in accordance with ERSA EMERG Section 1.5.

Changes: BITUM REPLACES TIMMY, VALIDITY INDICATOR.

PPHSR18-179